



JUMEIRAH  
MADINAT JUMEIRAH  
DUBAI



The destination for  
discerning Dubai travelers





# Madinat Jumeirah

Discover the resort's four beachfront hotels: Jumeirah Al Naseem, Jumeirah Al Qasr, Jumeirah Mina Al Salam and Jumeirah Dar Al Masyaf, with 29 traditional Arabian Houses and seven Malakiya Villas. Our team of expert chefs, fitness instructors, event organisers and private butlers are at your fingertips, allowing you to personalise your stay exactly to your liking.

Madinat Jumeirah, the Arabian resort of Dubai, captures the natural beauty of the region. The resort features a two kilometer pristine private beach and complimentary access to Wild Wadi Waterpark. With over 20 restaurants and bars spread across the resort, guests can choose from a selection of Gault&Millau and Michelin star guide restaurants, providing a wealth of dining options to suit every palate. Enjoy access to state-of-the-art facilities at our fitness centres, kids clubs and Talise Spa. Step into Souk Madinat Jumeirah, a traditional retail experience showcasing the best of Arabia.

Make yourself at home in our spacious suites and stylish villas, which are perfect for a group holiday, family reunion and memorable celebrations. Wake up to mesmerising views with complimentary daily breakfast, afternoon tea and sundowners overlooking the iconic Jumeirah Burj Al Arab within the privacy of your suite, villa or within our newly refurbished Club Lounges.





# Jumeirah Al Naseem

A contemporary coastal setting with allure and elegance, where the connected come together.

Jumeirah Al Naseem reflects the image of modern and vibrant Dubai. With interior design inspired by sand dunes, blue skies and sea breeze delivering strong sense of place. Boasting the Royal Penthouse with a private infinity swimming pool, the Royal Suite's private cinema and Presidential Suites' private terrace, indulge in our luxury amenities and butler service with personalised and anticipatory attention to your needs.

From the balconies and extended terraces, there are spectacular views of the sea, the resort's landscaped gardens and Jumeirah Burj Al Arab





# Royal Penthouse

Our Royal Penthouse redefines luxury living with 760sqm of indoor and outdoor space spanning an entire floor. Step out of our limousine and into your private elevator, checking into a world of bespoke sculptural furnishings and couture-inspired finishes.

A high-ceiling hallway connects five grand bedrooms with a private terrace, featuring your own outdoor/indoor fitness studio and 11-metre infinity pool. Delight in complimentary drinks and dazzling views overlooking the Arabian Gulf and Jumeirah Burj Al Arab. After an unforgettable day, indulge in a sensory shower combining steam, aromatherapy and chromotherapy before a perfect night's sleep.

## Suite benefits & amenities

- Dedicated Guest Experience Manager and butler to cater to your every need
- Unlimited access to the Orchid Lounge, offering complimentary daily breakfast, signature afternoon tea and sundowners
- Exclusive access to Summersalt Beach Club for guests aged 12 years and over
- Complimentary suit pressing (one suit or garment per stay)
- Complimentary soft minibar throughout your stay
- Luxury bathroom amenities
- Return transfers to/from Dubai International Airport
- Complimentary Wi-Fi access in the suite and around the resort

## Resort facilities

- Access to Jumeirah's two kilometre pristine private beach
- Access to our temperature-controlled pools
- Access to over 20 restaurants and bars including award-winning dining options
- Access to Talise Fitness & J Club
- Access to Talise Spa
- Complimentary Wild Wadi Waterpark™ entry for all guests
- Complimentary Abra tours across the resort
- Access to the Turtle Rehabilitation Lagoon
- Access to Souk Madinat Jumeirah

Scan to take the virtual tour



## Features

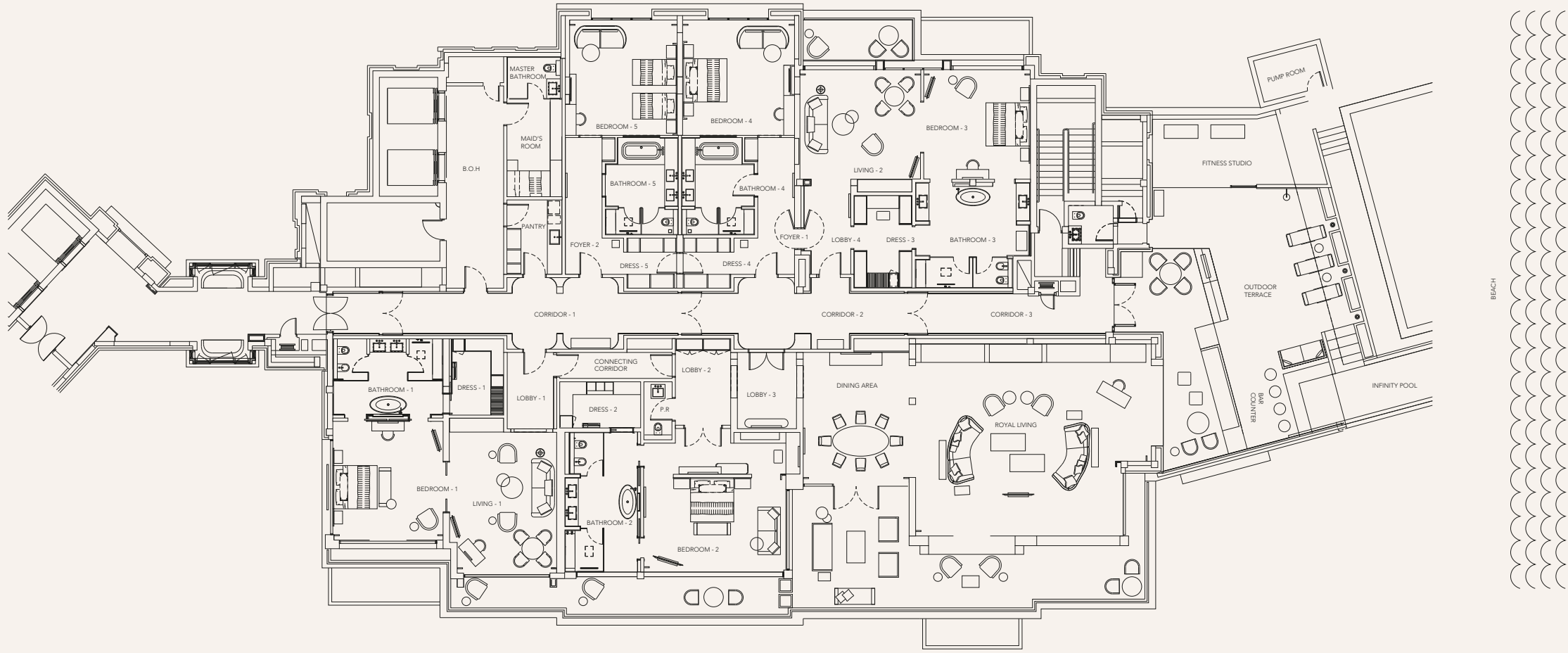
- Five spacious bedrooms and en-suite bathrooms
- Three spacious living and dining areas
- Private terrace with an 11-metre infinity pool and fitness studio with Technogym equipment
- Uninterrupted views of the iconic Jumeirah Burj Al Arab
- Dedicated elevator access to your penthouse
- Interconnecting features between rooms
- One adjoining room for accompanying service staff
- Suite can be sold as one, two, three, four or five-bed suite





# Jumeirah Al Naseem

Royal Penthouse Floor plan







# Two Bedroom Royal Suite

This palatial suite includes two lavish bedrooms, an extensive living room, a cinema, fitness room and a tranquil outdoor space. As a Royal Suite guest, you can enjoy an unmatched level of relaxation and bask in its regal ambiance.

## Suite benefits & amenities

- Suite butler service
- Unlimited access to the Orchid Lounge, offering complimentary daily breakfast, signature afternoon tea and sundowners
- Exclusive access to Summersalt Beach Club for guests aged 12 years and over
- Complimentary suit pressing (one suit or garment per stay)
- Luxury bathroom amenities
- Return transfers to/from Dubai International Airport
- Complimentary Wi-Fi access in the suite and around the resort

## Resort facilities

- Access to Jumeirah’s two kilometre pristine private beach
- Access to our temperature-controlled pools
- Access to over 20 restaurants and bars including award-winning dining options
- Access to Talise Fitness & J Club
- Access to Talise Spa
- Complimentary Wild Wadi Waterpark™ entry for all guests
- Complimentary Abra tours across the resort
- Access to the Turtle Rehabilitation Lagoon
- Access to Souk Madinat Jumeirah

## Features

- Two lavish bedrooms and extensive living room
- Private outdoor terrace with expansive living space
- Uninterrupted views of the iconic Jumeirah Burj Al Arab
- In-suite kitchen and dining space
- Private cinema within your suite
- In-suite exercise room
- Two large open-plan bathrooms
- Widescreen interactive HD LED TV



Scan to take the virtual tour

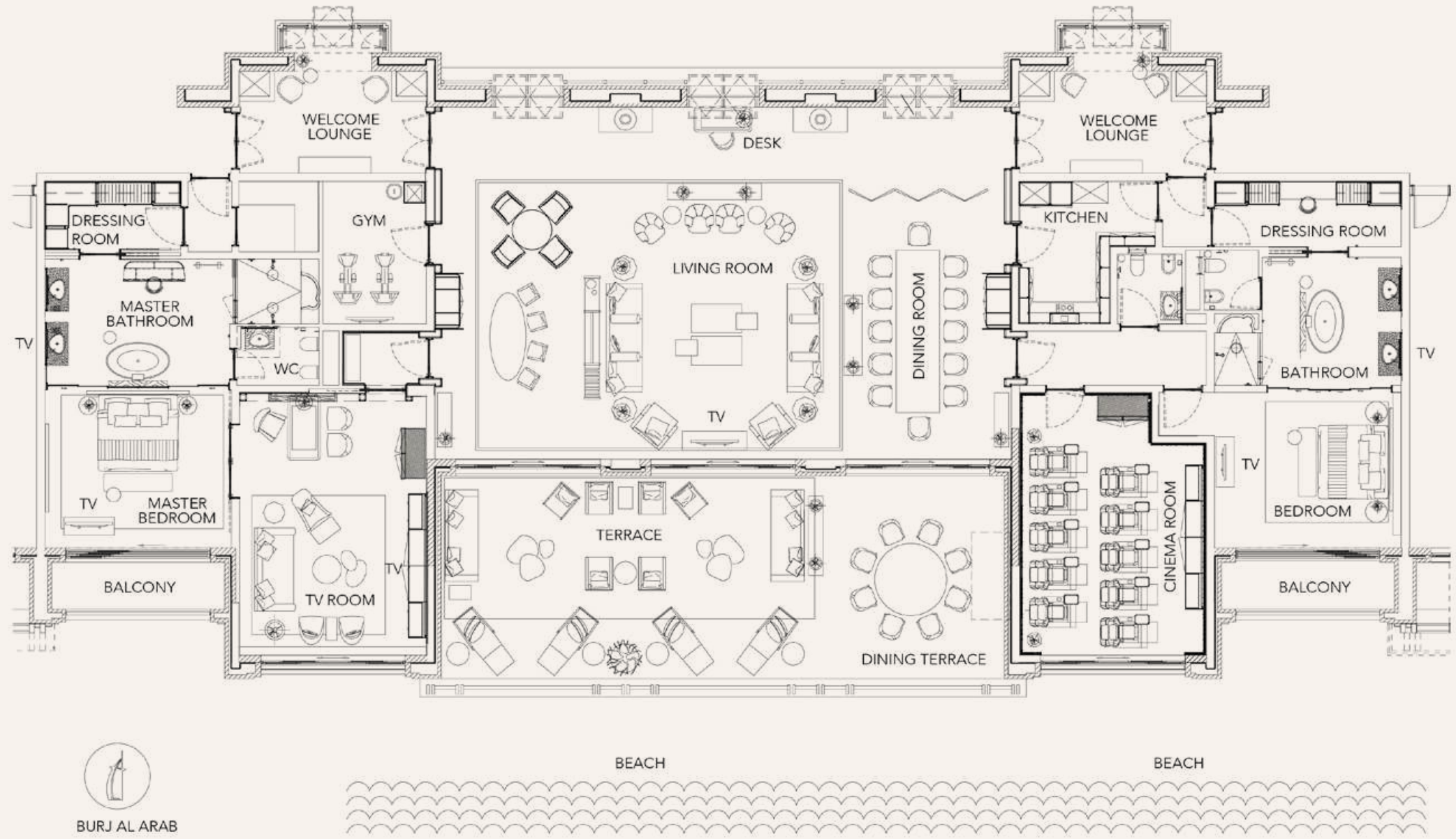






# Jumeirah Al Naseem

Royal Suite Floor Plan







# Two Bedroom Presidential

This premium beachside suite features two lavish bedrooms and a sleek living space, blending the neutral colours of the desert with the blues and whites of Dubai oysters. Our Two Bedroom Presidential Suite is designed to leave you with an unforgettable experience.

## Suite benefits & amenities

- Suite butler service
- Unlimited access to the Orchid Lounge, offering complimentary daily breakfast, signature afternoon tea and sundowners
- Exclusive access to Summersalt Beach Club for guests aged 12 years and over
- Complimentary suit pressing (one suit or garment per stay)
- Luxury bathroom amenities
- Return transfers to/from Dubai International Airport
- Complimentary Wi-Fi access in the suite and around the resort

## Resort facilities

- Access to Jumeirah's two kilometre pristine private beach
- Access to our temperature-controlled pools
- Access to over 20 restaurants and bars including award-winning dining options
- Access to Talise Fitness and J Club
- Access to Talise Spa
- Complimentary Wild Wadi Waterpark™ entry for all guests
- Complimentary Abra tours across the resort
- Access to the Turtle Rehabilitation Lagoon
- Access to Souk Madinat Jumeirah

## Features

- Two lavish bedrooms and spacious living room
- In-suite kitchen
- Uninterrupted views of the iconic Jumeirah Burj Al Arab
- Private outdoor terrace with living and dining areas
- Two large open-plan bathrooms
- Widescreen interactive HD LED TV

Scan to take the virtual tour

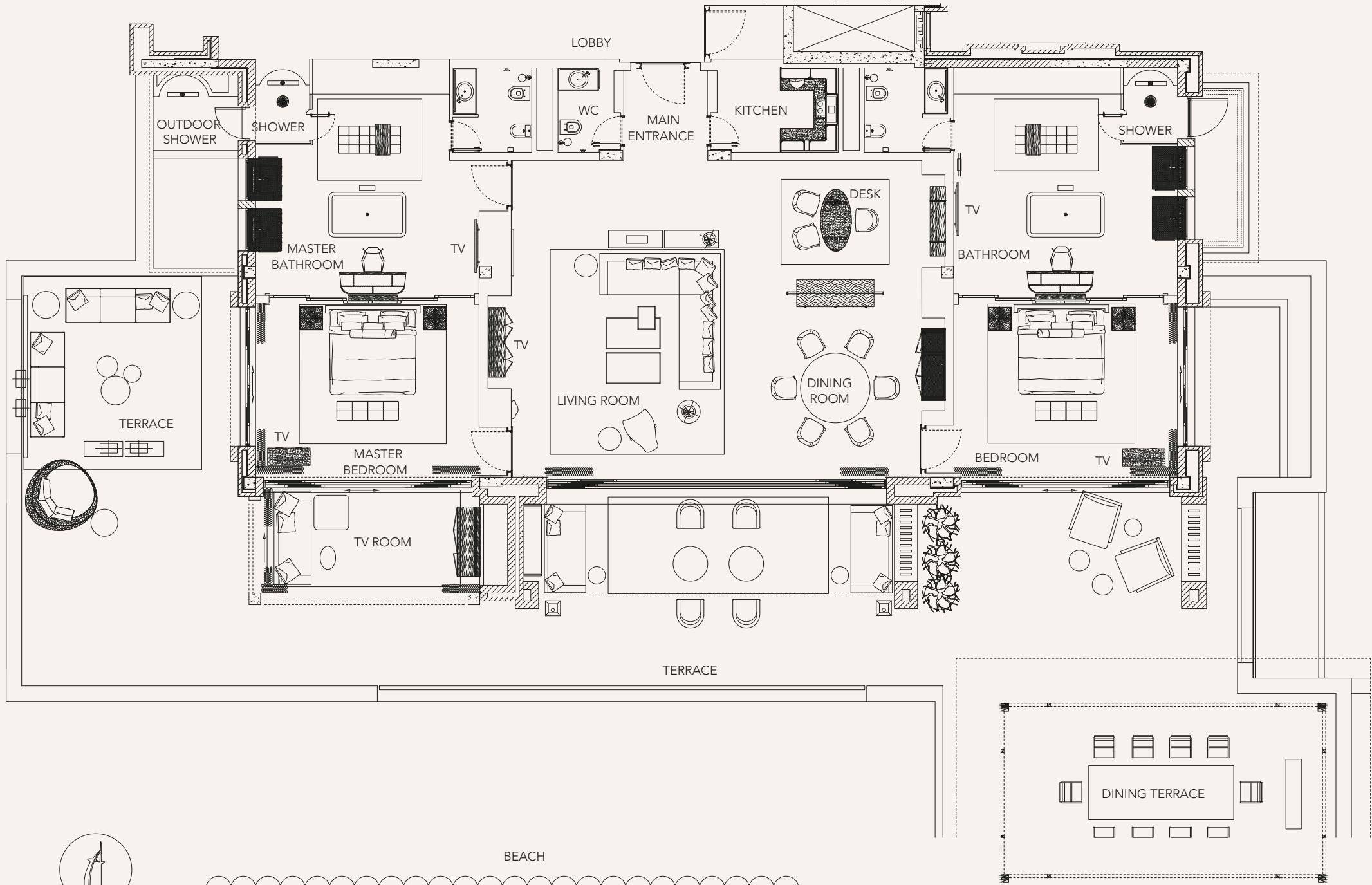






# Jumeirah Al Naseem

Presidential Suite Floor plan



BURJ AL ARAB

BEACH







# Jumeirah Al Qasr

A majestic Arabian palace, designed to be explored, where wonder unfolds in every moment.

Designed in the style of a Sheikh's summer residence, Jumeirah Al Qasr welcomes you with a majestic arrival experience, setting the stage for a truly royal stay. This opulent hotel boasts 294 rooms and suites embellished in traditional Arabian décor, offering stunning views of the Arabian Gulf and lavish surroundings.

Step into the regal ambience as you wander through the corridors adorned with unblemished artworks and grand palatial architecture. Rediscover yourself at our award-winning wellness sanctuary at Talise Spa and savour culinary delights from all corners of the world.





# Three Bedroom Royal Suite

Undeniably elegant and luxurious, our Three Bedroom Royal Suite’s gentle grandeur and palatial style offers both discreet privacy and exceptional service. Positioned on the top floor of Jumeirah Al Qasr, the breathtaking views from the expansive terrace reach out past the iconic Jumeirah Burj Al Arab over the Arabian Gulf.

## Suite benefits & amenities

- Signature afternoon tea at The Palace Lounge
- Sundowners at Celeste Lounge or The Palace Lounge
- Minibar replenished daily with soft drinks
- Daily breakfast at The Palace Lounge or French Riviera Beach (subject to availability)
- E-Butler service
- 15% savings on laundry and pressing services
- Luxury bathroom amenities
- Return transfers to/from Dubai International Airport
- Complimentary Wi-Fi access in the suite and around the resort

## Resort facilities

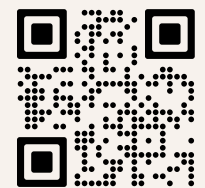
- Access to Jumeirah’s two kilometre pristine private beach
- Access to our temperature-controlled pools
- Access to over 20 restaurants and bars including award-winning dining options
- Access to J Club fitness facilities
- Access to Talise Spa
- Complimentary Wild Wadi Waterpark™ entry for all guests
- Complimentary Abra tours across the resort
- Access to the Turtle Rehabilitation Lagoon
- Access to Souk Madinat Jumeirah

## Features

- Three spacious bedrooms and lavish living spaces
- Fully equipped kitchen
- Spacious marble bathrooms with jet shower jacuzzi
- Uninterrupted views of the iconic Jumeirah Burj Al Arab
- Large private terrace and powder room
- Office with iMac and printer
- Two widescreen interactive HD LED TVs and home theatre. Playstation available on request



Scan to take the virtual tour

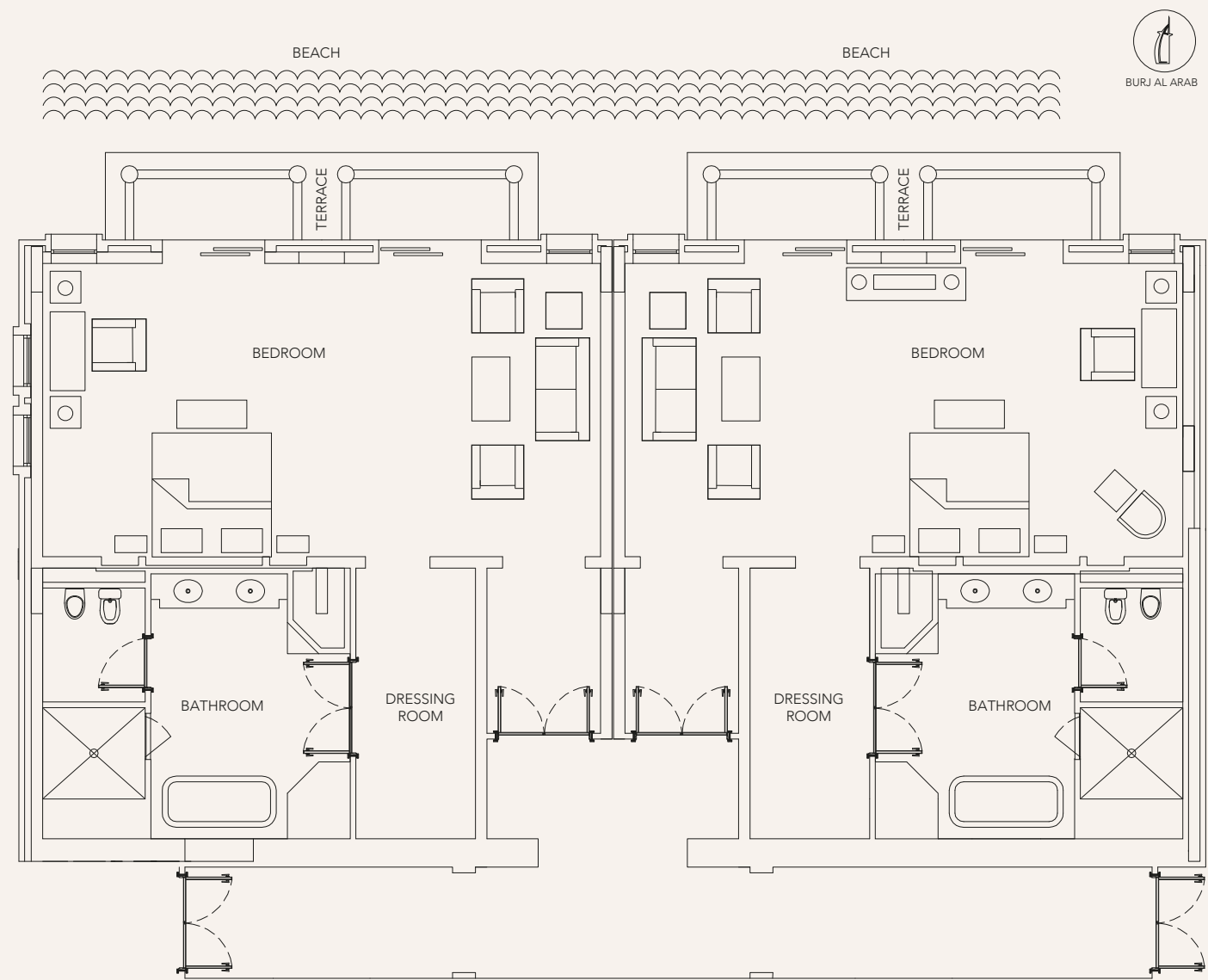
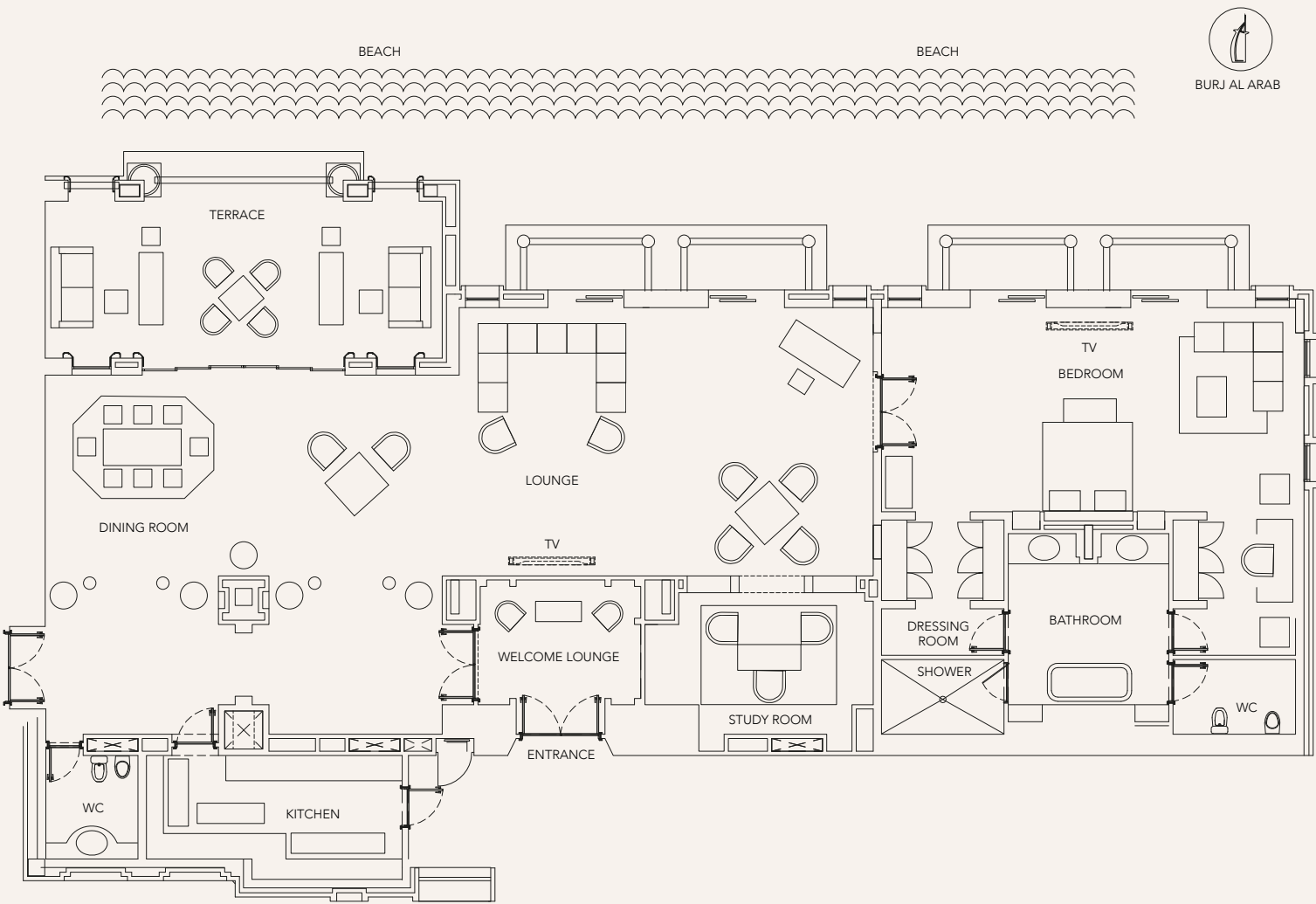






# Jumeirah Al Qasr

Royal Suite Floor Plan







# Two Bedroom Family Suite

The Two Bedroom Family Suite offers a remarkable space with a private terrace, stylish bedrooms and spacious bathrooms that offer stunning views of the shimmering waters of the Arabian Gulf and the iconic Jumeirah Burj Al Arab. The elegant living and dining areas are ideal for hosting intimate gatherings and soirées.

## Suite benefits & amenities

- Signature afternoon tea at The Palace Lounge
- Sundowners at Celeste Lounge or The Palace Lounge
- Minibar replenished daily with soft drinks
- Daily breakfast at The Palace Lounge or French Riviera Beach (subject to availability)
- E-Butler service
- 15% savings on laundry and pressing services
- Luxury bathroom amenities
- Return transfers to/from Dubai International Airport
- Complimentary Wi-Fi access in the suite and around the resort

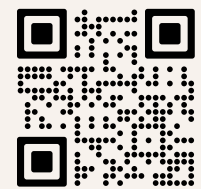
## Resort facilities

- Access to Jumeirah's two kilometre pristine private beach
- Access to our temperature-controlled pools
- Access to over 20 restaurants and bars including award-winning dining options
- Access to J Club fitness facilities
- Access to Talise Spa
- Complimentary Wild Wadi Waterpark™ entry for all guests
- Complimentary Abra tours across the resort
- Access to the Turtle Rehabilitation Lagoon
- Access to Souk Madinat Jumeirah

## Features

- Two spacious bedrooms and lavish living spaces
- A small kitchen with coffee machine, microwave oven and refrigerator
- Two spacious marble bathrooms with jet shower and jacuzzi
- Uninterrupted views of the iconic Jumeirah Burj Al Arab
- Large private terrace
- Three widescreen interactive HD LED TVs and home theatre. Playstation available on request

Scan to take the virtual tour

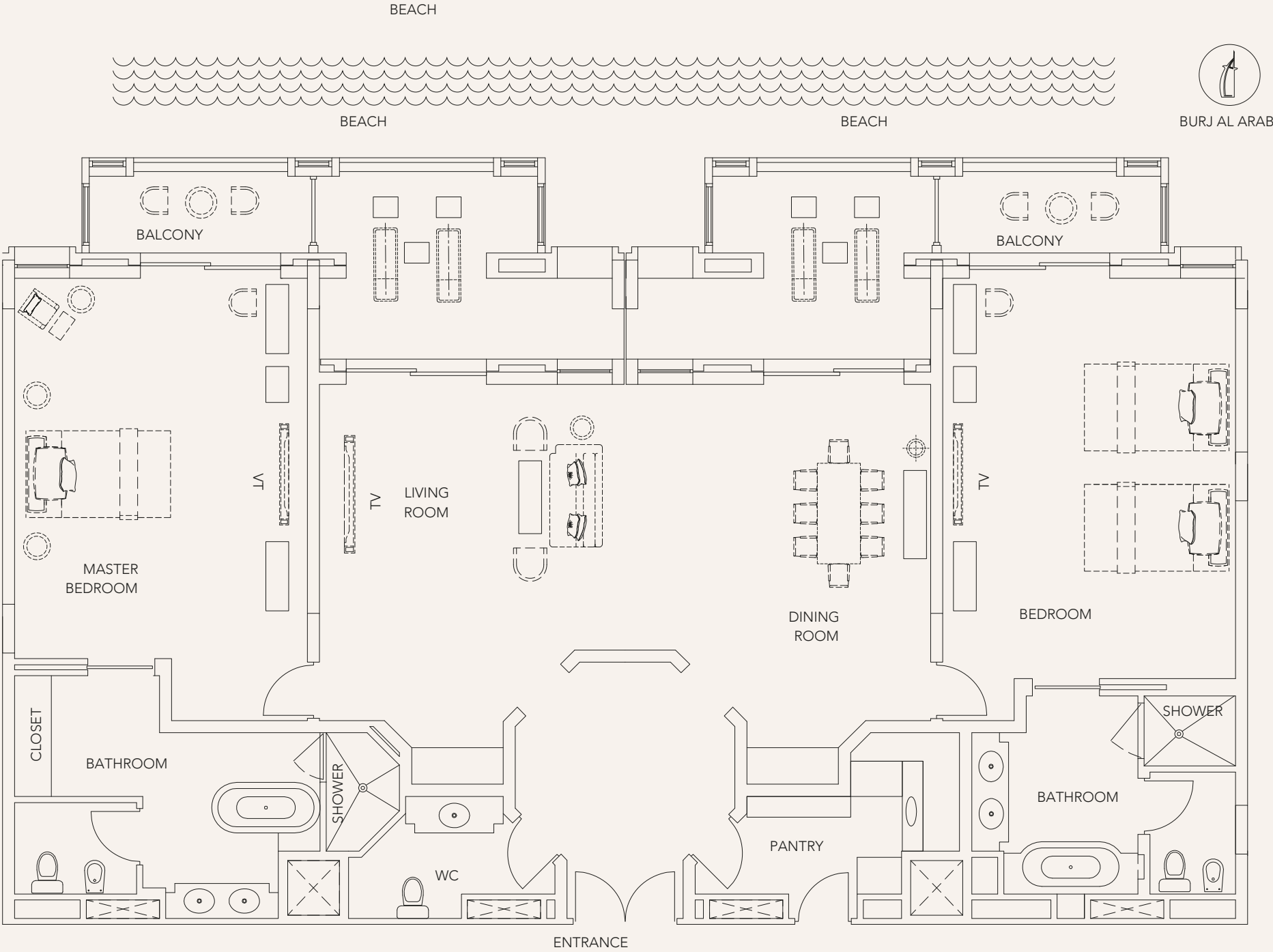






# Jumeirah Al Qasr

Two Bedroom Family Suite Floor Plan







# Jumeirah Mina Al Salam

A lively beachside retreat, where vibrant days and relaxed moments unfold in a setting of Arabian charm.

Jumeirah Mina Al Salam is the heart of our sprawling resort. The spacious 291 guest rooms and suites have been beautifully renovated with private balconies overlooking the ocean, offering authentic Arabian experiences with family-friendly service. The aesthetic has rooms bathed in natural light and cooled by a fresh sea breeze, encompassing a neutral colour palette, mesmerising views of the Arabian Gulf and the iconic Jumeirah Burj Al Arab.

Meaning 'Harbour of Peace', the hotel forms the gateway to a collection of restaurants, bars and shops. It is the entry point from which numerous waterways and walkways thread their way to all corners of the resort. Its new look and enhanced ambience were created with discerning travellers in mind.





# Two Bedroom Royal Suite

The jewel in the resort's crown. The Royal Suite boasts panoramic views of the Arabian Gulf and the iconic Jumeirah Burj Al Arab. With its recent refurbishment of neutral tones and ornate detailing, it provides a more regal and refined setting, perfect for making a truly royal stay.

## Suite benefits & amenities

- Unlimited access to the Amal Lounge, offering complimentary daily breakfast, signature afternoon tea and sundowners
- 15% savings on laundry and pressing services
- Luxury bathroom amenities
- Return transfers to/from Dubai International Airport
- Complimentary Wi-Fi access in the suite and around the resort

## Resort facilities

- Access to Jumeirah's two kilometre pristine private beach
- Access to our temperature-controlled pools
- Access to over 20 restaurants and bars including award-winning dining options
- Access to J Club fitness facilities
- Access to Talise Spa
- Complimentary Wild Wadi Waterpark™ entry for all guests
- Complimentary Abra tours across the resort
- Access to the Turtle Rehabilitation Lagoon
- Access to Souk Madinat Jumeirah

## Features

- Two elegant bedrooms and lavish living space
- In-suite kitchen and dining space
- Uninterrupted views of the iconic Jumeirah Burj Al Arab
- A private outdoor terrace
- Two grand Arabic-style marble clad bathroom with a walk-in rainfall shower, jacuzzi bath and powder room
- Widescreen interactive HD LED TVs

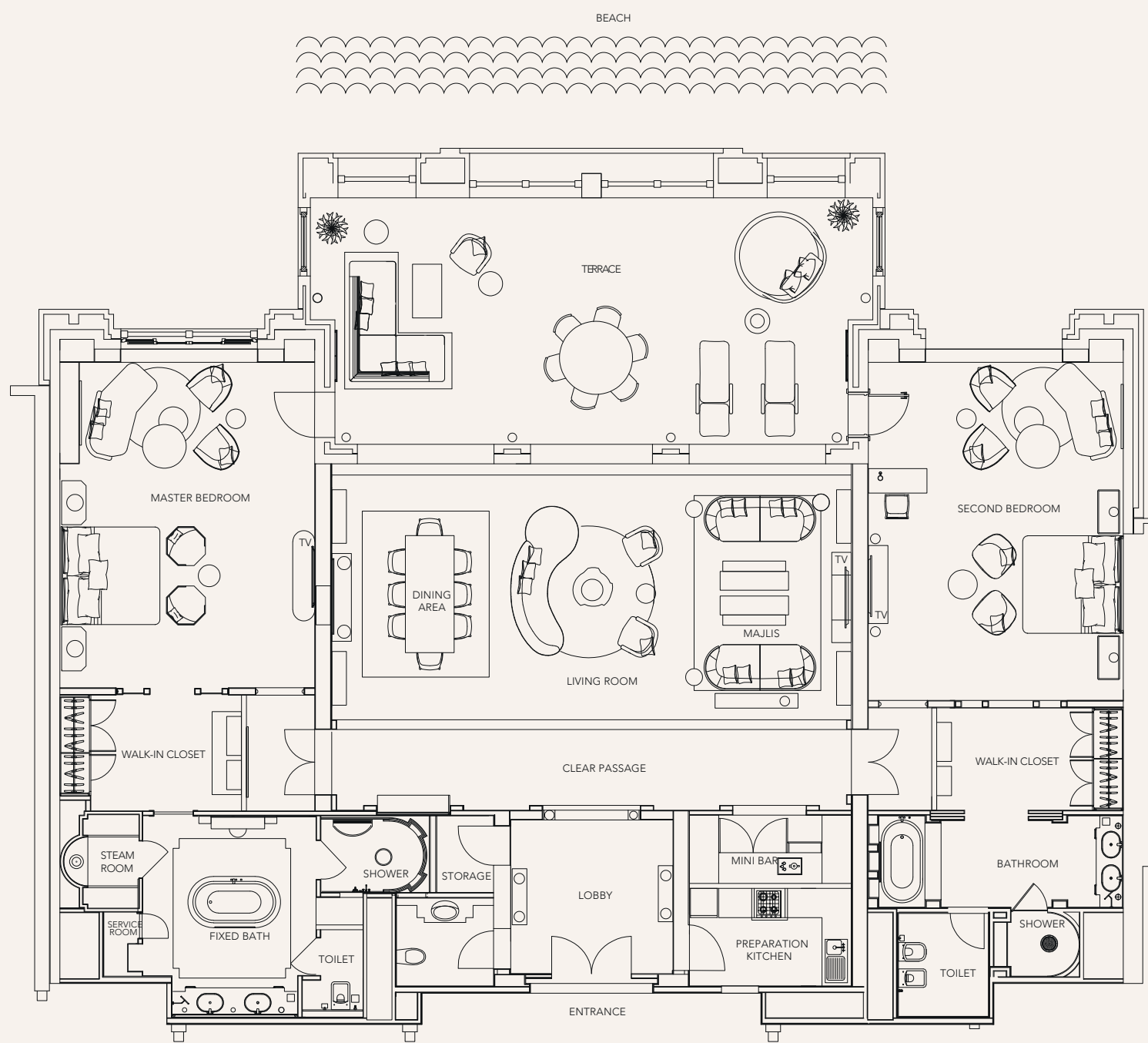






# Jumeirah Mina Al Salam

Two Bedroom Royal Suite Floor Plan







# Two Bedroom Ocean Terrace Suite

Unwind and soak in the breathtaking views against the shimmering backdrop of the Arabian Gulf in our newly refurbished Two Bedroom Ocean Terrace Suite. From the spacious bedrooms and living areas, to the grand terraces with built-in jacuzzi and outdoor shower area, there's perfection in every detail.

## Suite benefits & amenities

- Unlimited access to the Amal Lounge, offering complimentary daily breakfast, signature afternoon tea and sundowners
- 15% savings on laundry and pressing services
- Luxury bathroom amenities
- Generous soft minibar
- Return transfers to/from Dubai International Airport
- Complimentary Wi-Fi access in the suite and around the resort

## Features

- Two separate living areas
- Extensive dining area and private balcony
- An expansive outdoor terrace with vast living space
- Uninterrupted views of the iconic Jumeirah Burj Al Arab
- An outdoor area with dining, built-in jacuzzi and shower
- A grand marble-clad master bathroom with a walk-in rainfall shower and a separate large bathtub
- Widescreen interactive HD LED TVs

## Resort facilities

- Access to Jumeirah's two kilometre pristine private beach
- Access to our temperature-controlled pools
- Access to over 20 restaurants and bars including award-winning dining options
- Access to J Club fitness facilities
- Access to Talise Spa
- Complimentary Wild Wadi Waterpark™ entry for all guests
- Complimentary Abra tours across the resort
- Access to the Turtle Rehabilitation Lagoon
- Access to Souk Madinat Jumeirah

Scan to take the virtual tour

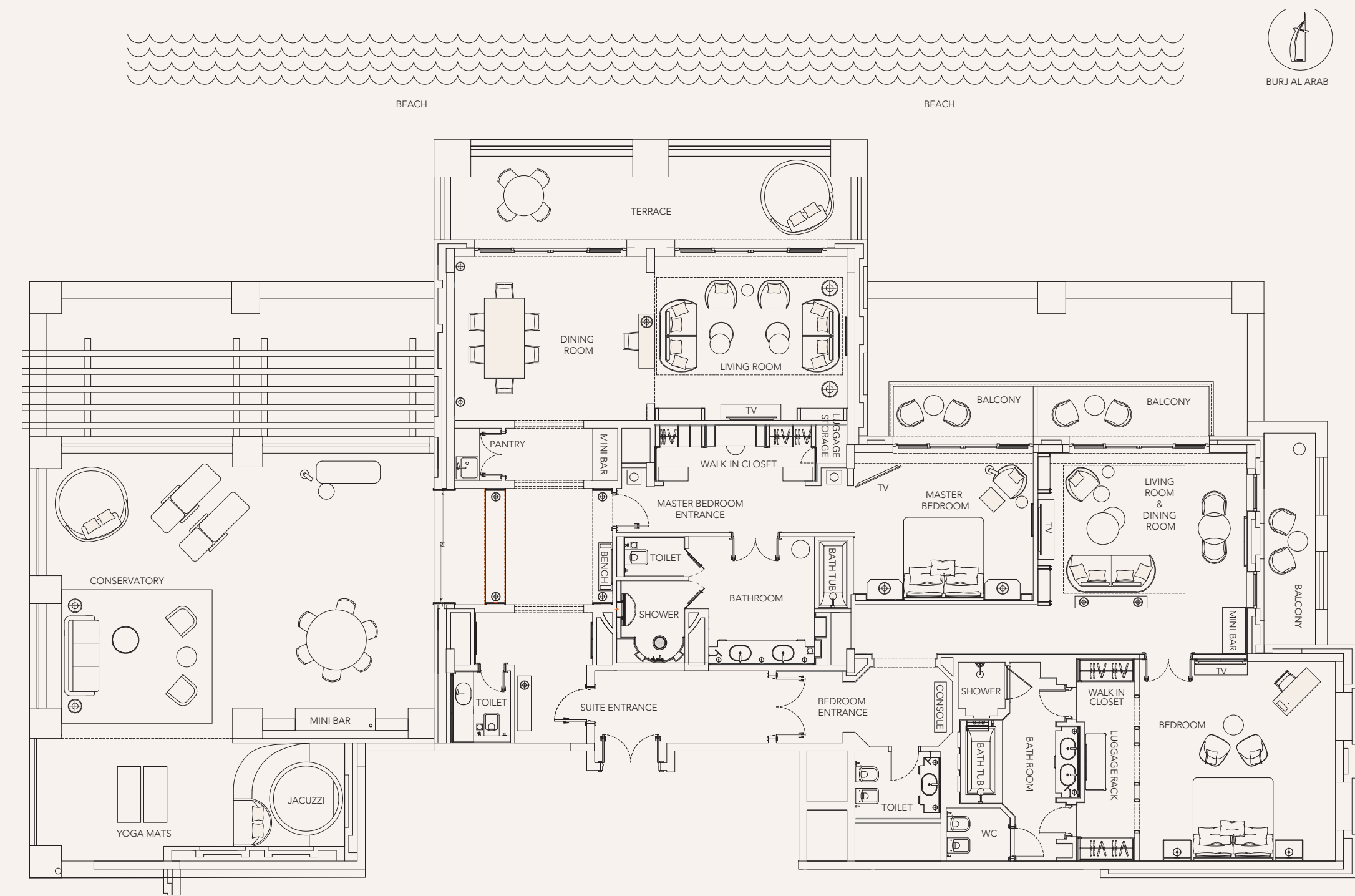






# Jumeirah Mina Al Salam

Two Bedroom Ocean Terrace Suite Floor plan







# Jumeirah Dar Al Masyaf

Tranquil Arabian Houses nestled within waterways and gardens, where heartfelt moments are hosted.

Set amongst tranquil gardens, glimmering waterways and a two-kilometre private beach, the intimate and exquisite Jumeirah Dar Al Masyaf comprise of 29 Arabian Houses offering 290 spacious rooms, private pools and dedicated hosts providing understated elegance. Accessible by a traditional Abra, guests staying in Jumeirah Dar Al Masyaf can experience traveling through Madinat Jumeirah's azure waters to arrive at their hotel room.





# Palm House Garden Suite

Indulge in the comfort and charm of the suite while enjoying the serenity of nature.

## Suite benefits & amenities

- Unlimited access to the Palace Lounge, offering complimentary daily breakfast and signature afternoon tea
- Complimentary evening apéritifs
- Luxury bathroom amenities
- Return transfers to/from Dubai International Airport
- Complimentary Wi-Fi access in the suite and around the resort

## Features

- Spacious marble bathroom with jet shower and jacuzzi
- Lavish living space
- Private terrace
- Two widescreen interactive HD LED TVs

## Resort facilities

- Access to Jumeirah’s two kilometre pristine private beach
- Access to over 20 restaurants and bars including award-winning dining options
- Access to J Club fitness facilities
- Access to Talise Spa
- Complimentary Wild Wadi Waterpark™ entry for all guests
- Complimentary Abra tours across the resort
- Access to the Turtle Rehabilitation Lagoon
- Access to Souk Madinat Jumeirah
- Access to KiDS at Jumeirah Al Qasr
- Personalised host service
- Access to exclusive pools

Scan to take the virtual tour







# Cove House Garden Suite

Enjoy lush garden views from your expansive terrace and immerse in the beauty of nature.

## Suite benefits & amenities

- Unlimited access to the Palace Lounge, offering complimentary daily breakfast and signature afternoon tea
- Complimentary evening apéritifs
- Luxury bathroom amenities
- Return transfers to/from Dubai International Airport
- Complimentary Wi-Fi access in the suite and around the resort

## Features

- Spacious marble bathroom with jet shower and jacuzzi
- Lavish living space
- Private terrace
- Two widescreen interactive HD LED TVs

## Resort facilities

- Access to Jumeirah's two kilometre pristine private beach
- Access to over 20 restaurants and bars including award-winning dining options
- Access to J Club fitness facilities
- Access to Talise Spa
- Complimentary Wild Wadi Waterpark™ entry for all guests
- Complimentary Abra tours across the resort
- Access to the Turtle Rehabilitation Lagoon
- Access to Souk Madinat Jumeirah
- Access to KiDS at Jumeirah Al Qasr
- Personalised host service
- Access to exclusive pools

Scan to take the virtual tour







# Beach House Ocean Suite

Bask in the expansive sea views from our terrace and enjoy the beach on your doorstep

## Suite benefits & amenities

- Unlimited access to the Palace Lounge, offering complimentary daily breakfast and signature afternoon tea
- Complimentary evening apéritifs
- Luxury bathroom amenities
- Return transfers to/from Dubai International Airport
- Complimentary Wi-Fi access in the suite and around the resort

## Features

- Spacious marble bathroom with jet shower and jacuzzi
- Lavish living space
- Private terrace
- Two widescreen interactive HD LED TVs

## Resort facilities

- Access to Jumeirah's two kilometre pristine private beach
- Access to over 20 restaurants and bars including award-winning dining options
- Access to J Club fitness facilities
- Access to Talise Spa
- Complimentary Wild Wadi Waterpark™ entry for all guests
- Complimentary Abra tours across the resort
- Access to the Turtle Rehabilitation Lagoon
- Access to Souk Madinat Jumeirah
- Access to KiDS at Jumeirah Al Qasr
- Personalised host service
- Access to exclusive pools

Scan to take the virtual tour







# Malakiya Villas

Hidden Gems of Jumeirah Dar Al Masyaf

Home to the most private offering of Madinat Jumeirah are the newly re-imagined Malakiya Villas. With its contemporary refurbishment, designed in the style of Old Arabia and built to represent the paragon of Arabian splendour amidst the winding waterways and verdant gardens. Malakiya translates as Royal and is an epitome of luxury comprising seven independent villas that are elegantly designed to connect guests to the true Arabian opulence, heritage and hospitality.





# Royal Malakiya Villa

Discover the pinnacle of luxury within our Royal Malakiya Villa, an exquisite retreat of unparalleled privacy. Spanning over two levels, unwind in your own private plunge pool, bask in the tranquil ambiance of the outdoor terrace, and cherish moments of seclusion in an oasis of unrivaled relaxation.

## Villa benefits & amenities

- Private butler service
- Complimentary daily breakfast, signature afternoon tea and apéritif served in your villa
- Access to a dedicated Abra station
- Luxury bathroom amenities
- Return transfers to/from Dubai International Airport
- Complimentary Wi-Fi access in the room and around the resort
- Daily amenities served from our signature restaurants (subject to length of stay)

## Features

- Two lavish bedrooms and living room
- In-villa kitchen and dining space
- Three bathrooms with a circular marble bathtub, en-suite jacuzzi, powder room and separate wardrobe
- In-villa elevator
- Exclusive rooftop terrace with a private jacuzzi
- Private balcony and a secluded plunge pool
- Dedicated private entrance and secluded villa
- Widescreen interactive HD LED TVs
- Sony PlayStation, home theatre system and iPod/iPhone docking station

## Resort facilities

- Access to Jumeirah's two kilometre pristine private beach
- Access to over 20 restaurants and bars including award-winning dining options
- Access to J Club fitness facilities
- Access to Talise Spa
- Complimentary Wild Wadi Waterpark™ entry for all guests
- Complimentary Abra tours across the resort
- Access to the Turtle Rehabilitation Lagoon
- Access to Souk Madinat Jumeirah
- Access to KiDS at Jumeirah Al Qasr



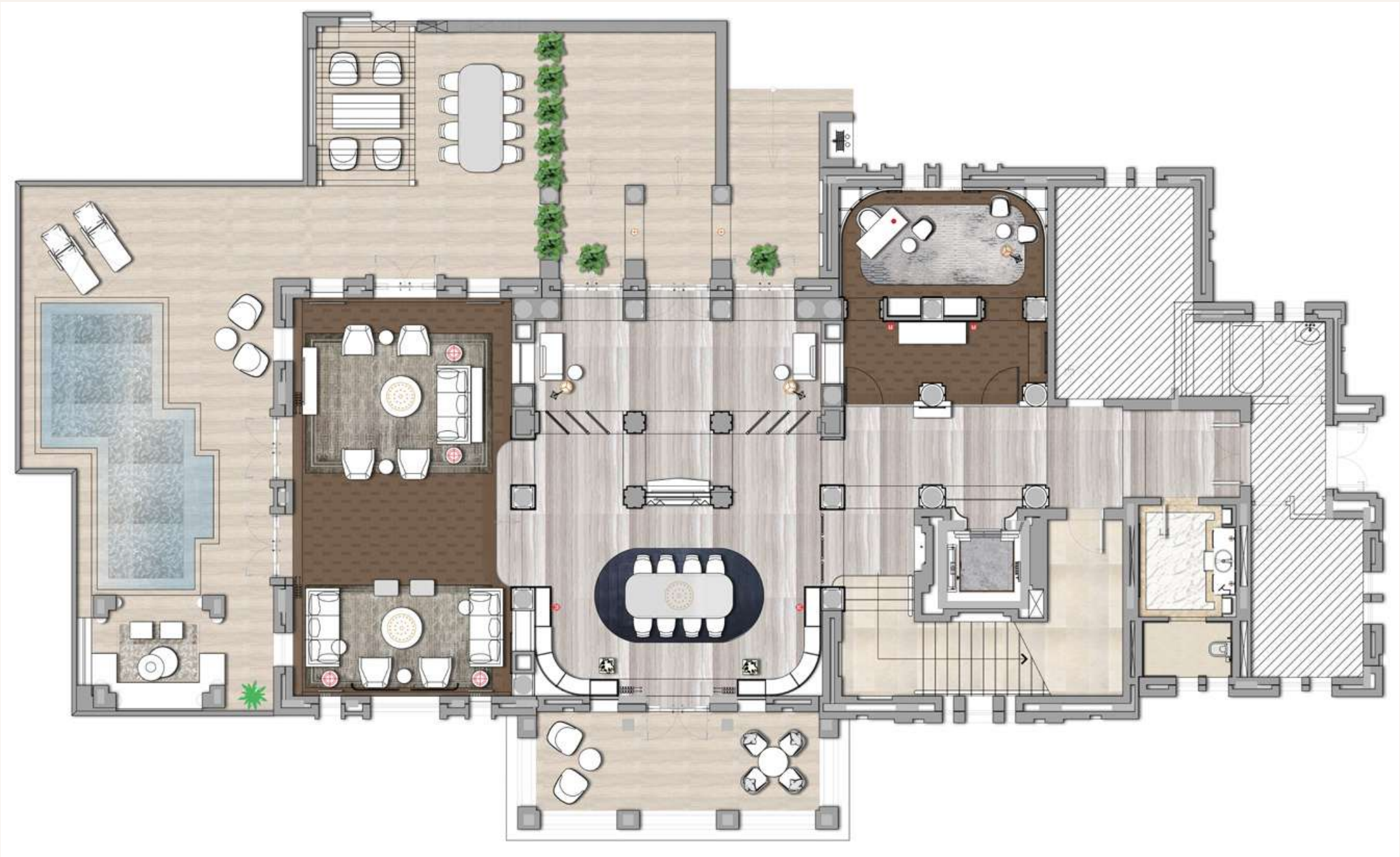




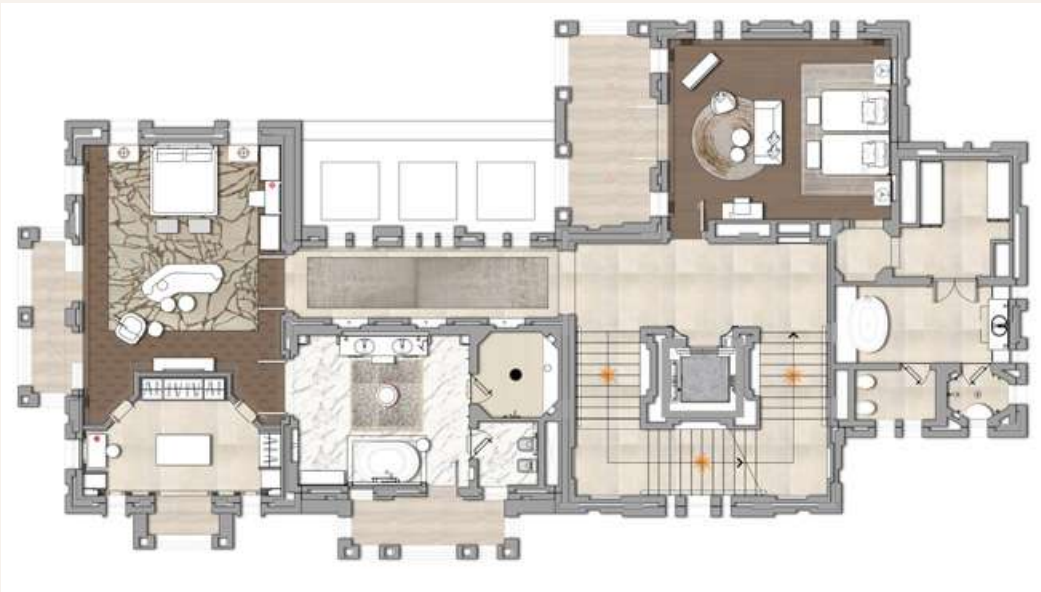
# Royal Malakiya Villa

Two Bedroom Villa Floor plan

GROUND FLOOR



FIRST FLOOR



ROOF FLOOR







# Malakiya Three Bedroom Villa

The Malakiya Three Bedroom Villas offer Arabian opulence in all its splendour. With a separate dining room, bar, kitchen, airy terraces, plunge pool and three bedrooms — all with their own en-suite jacuzzi bathroom and balcony — this villa is perfect for larger groups. As a guest in our Malakiya Villas, you unlock another world of comfort and privilege.

## Villa benefits & amenities

- Private butler service
- Complimentary daily breakfast, signature afternoon tea and apéritif served in your villa
- Access to a dedicated Abra station
- Luxury bathroom amenities
- Return transfers to/from Dubai International Airport
- Complimentary Wi-Fi access in the room and around the resort

## Features

- Three lavish bedrooms and living room
- In-villa kitchen and dining area
- Three bathrooms with a circular marble bathtub, en-suite jacuzzi, powder room and separate wardrobe
- Exclusive terrace with private plunge pool
- Widescreen interactive HD LED TVs
- Sony PlayStation, home theatre system and iPod/iPhone docking station

## Resort facilities

- Access to Jumeirah's two kilometre pristine private beach
- Access to over 20 restaurants and bars including award-winning dining options
- Access to J Club fitness facilities
- Access to Talise Spa
- Complimentary Wild Wadi Waterpark™ entry for all guests
- Complimentary Abra tours across the resort
- Access to the Turtle Rehabilitation Lagoon
- Access to Souk Madinat Jumeirah
- Access to KiDS at Jumeirah Al Qasr



Scan to take the virtual tour







# Malakiya Villa - Sama

Three Bedroom Villa Floor plan

## GROUND FLOOR



## FIRST FLOOR

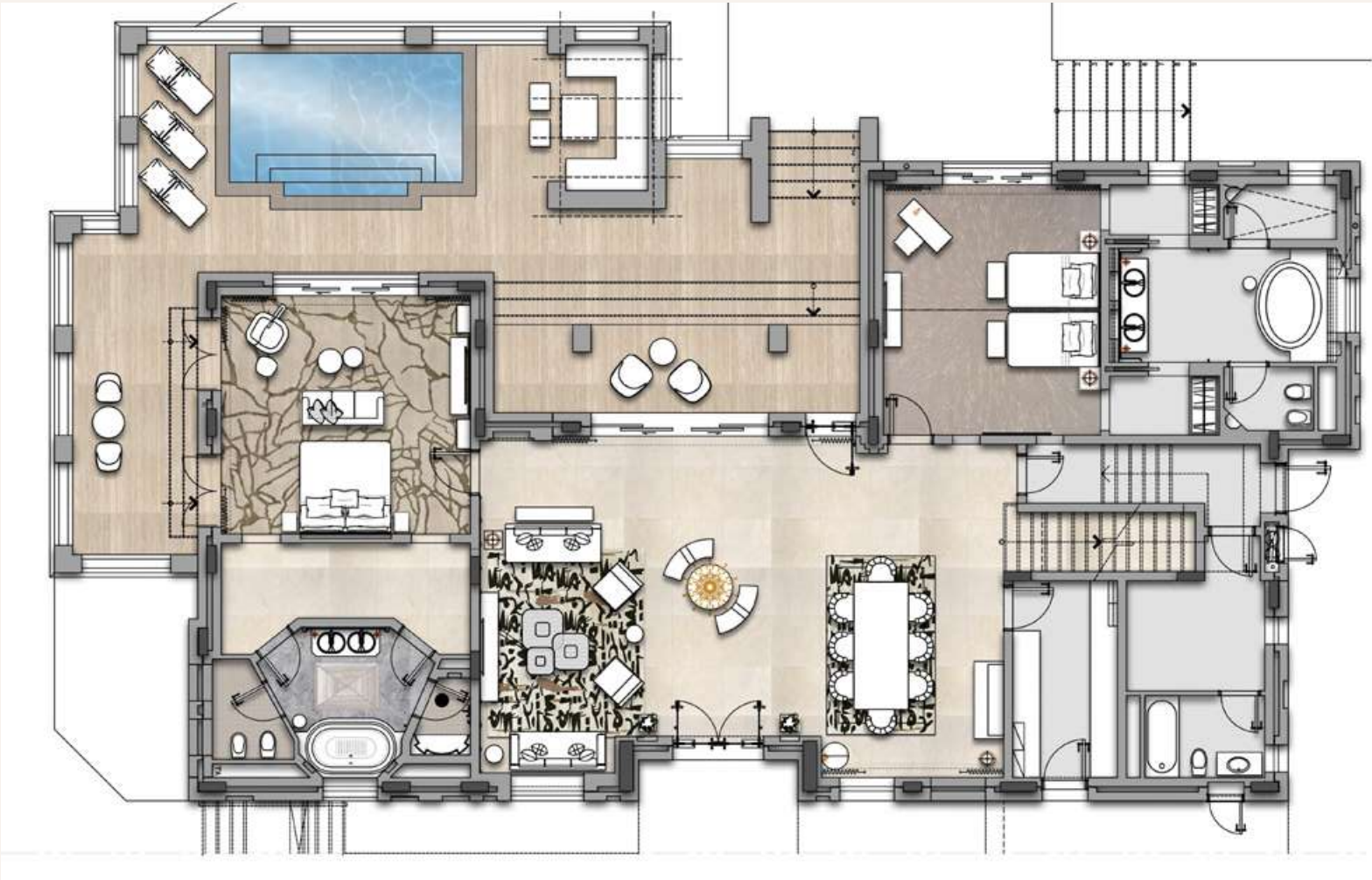




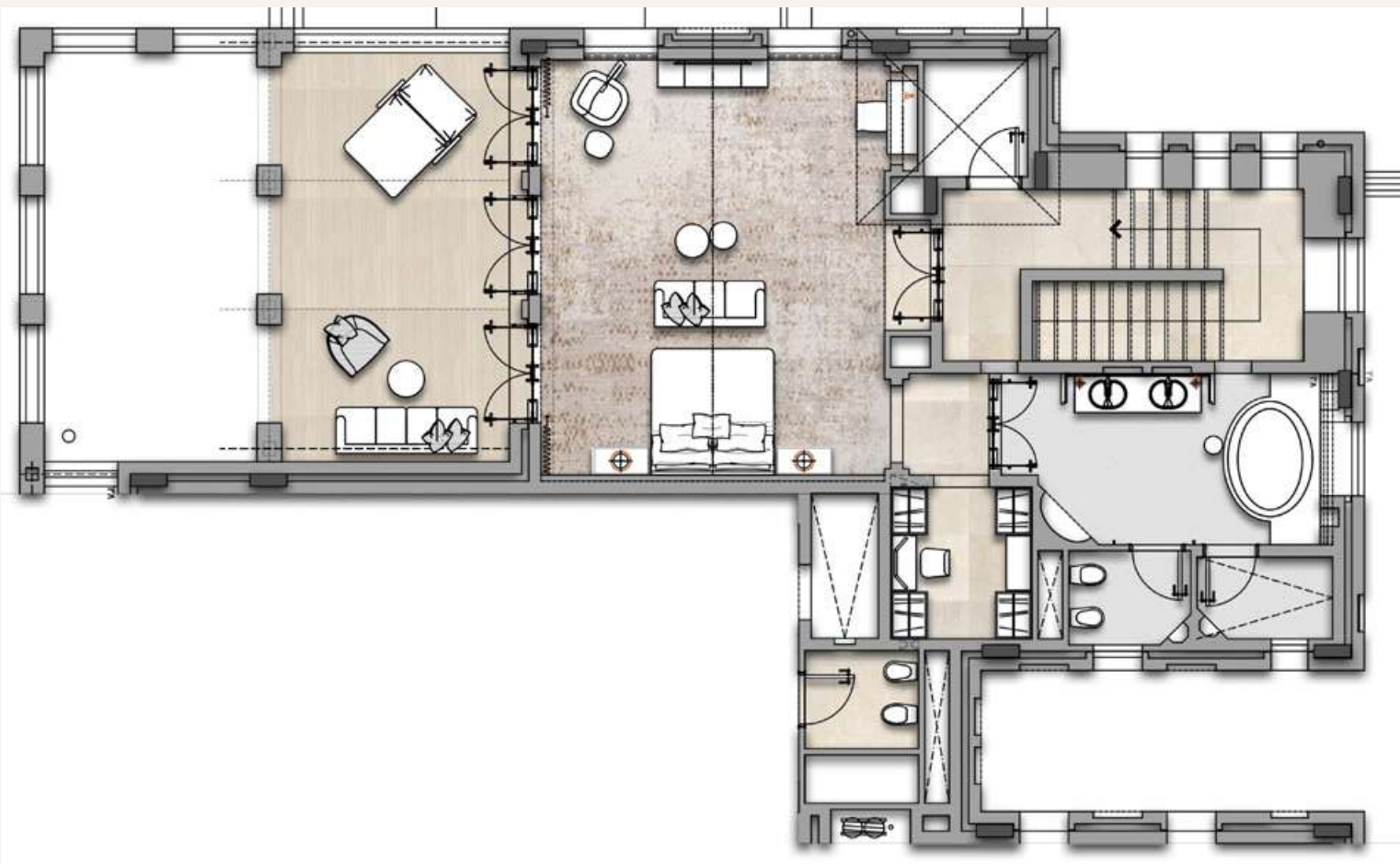
# Malakiya Villa - Tala

Three Bedroom Villa Floor Plan

GROUND FLOOR



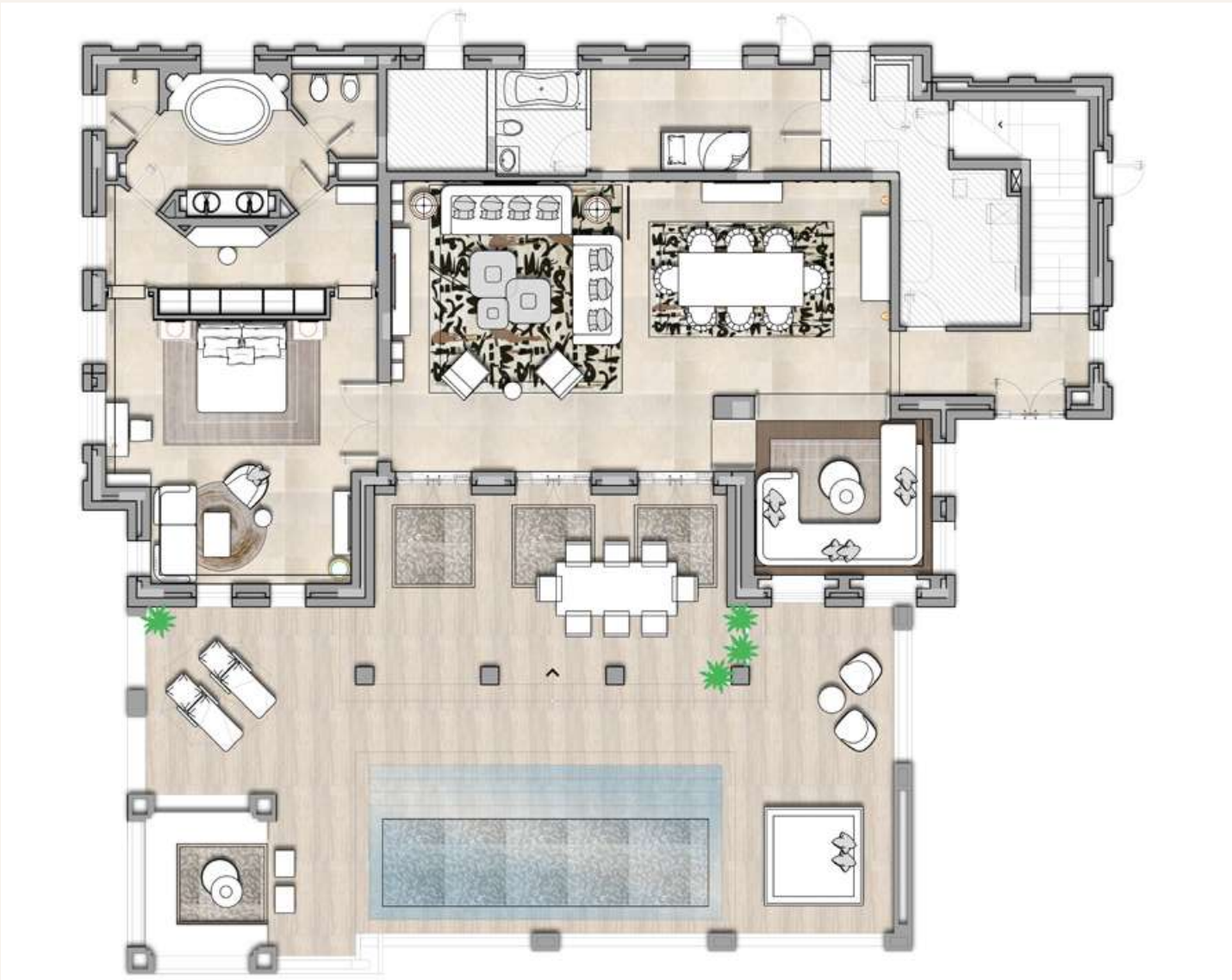
FIRST FLOOR



# Malakiya Villa - Mahra and Ayla

Three Bedroom Villa Floor Plan

GROUND FLOOR



FIRST FLOOR







# Malakiya Two Bedroom Villa

Set in luscious, secluded surroundings, each bedroom in the Malakiya Two Bedroom Villa has its own en-suite jacuzzi bathroom and balcony. The villa also has its own dining area, bar, kitchen, private terrace with plunge pool and gazebo. The Malakiya Two Bedroom Villas are a complete oasis where you can relax and unwind in contemporary splendor.

## Villa benefits & amenities

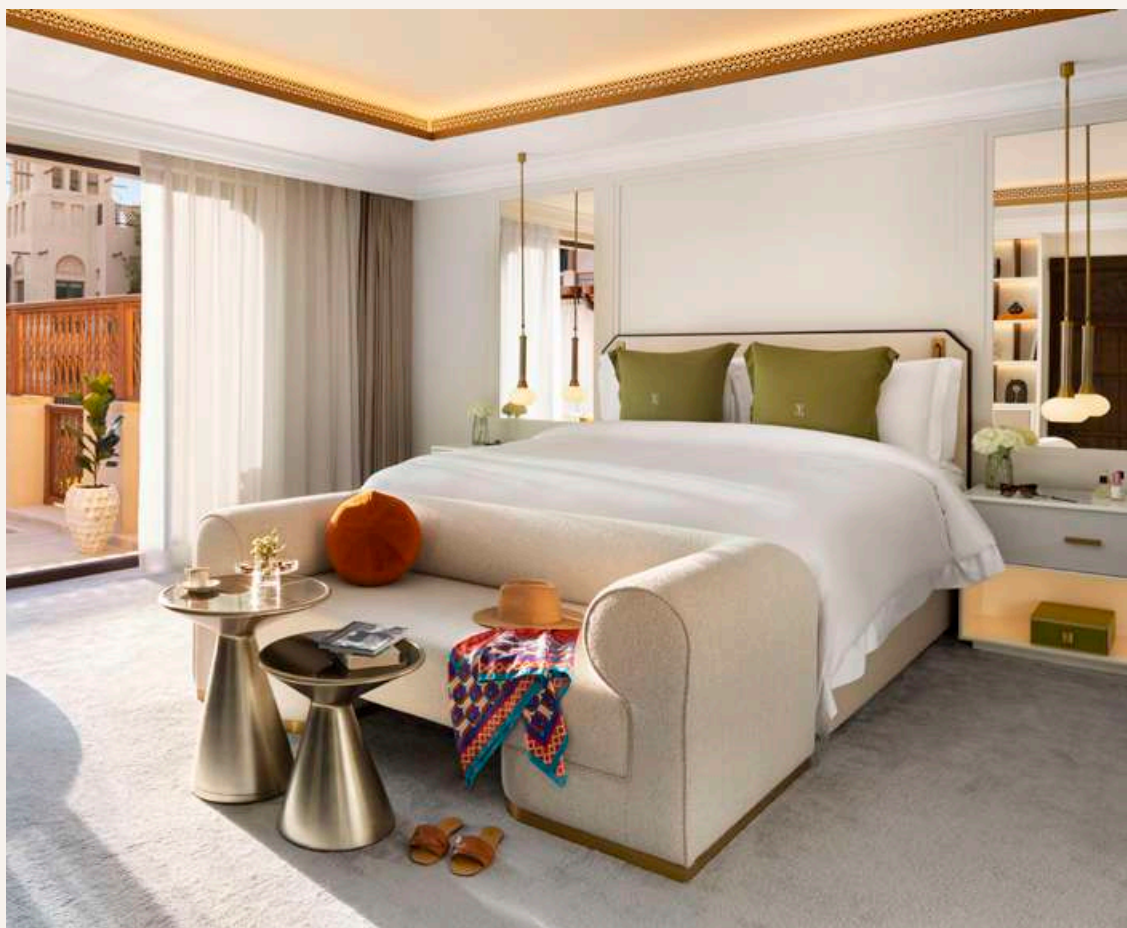
- Private butler service
- Complimentary daily breakfast, signature afternoon tea and apéritif served in your villa
- Access to a dedicated Abra station
- Luxury bathroom amenities
- Return transfers to/from Dubai International Airport
- Complimentary Wi-Fi access in the room and around the resort

## Resort facilities

- Access to Jumeirah's two kilometre pristine private beach
- Access to over 20 restaurants and bars including award-winning dining options
- Access to J Club fitness facilities
- Access to Talise Spa
- Complimentary Wild Wadi Waterpark™ entry for all guests
- Complimentary Abra tours across the resort
- Access to the Turtle Rehabilitation Lagoon
- Access to Souk Madinat Jumeirah
- Access to KiDS at Jumeirah Al Qasr

## Features

- Two lavish bedrooms and living room
- In-villa kitchen and dining space
- Two bathrooms with jet shower, en-suite jacuzzi, powder room and separate wardrobe
- Exclusive terrace with private plunge pool
- Widescreen interactive HD LED TVs
- Sony PlayStation, home theatre system and iPod/iPhone docking station

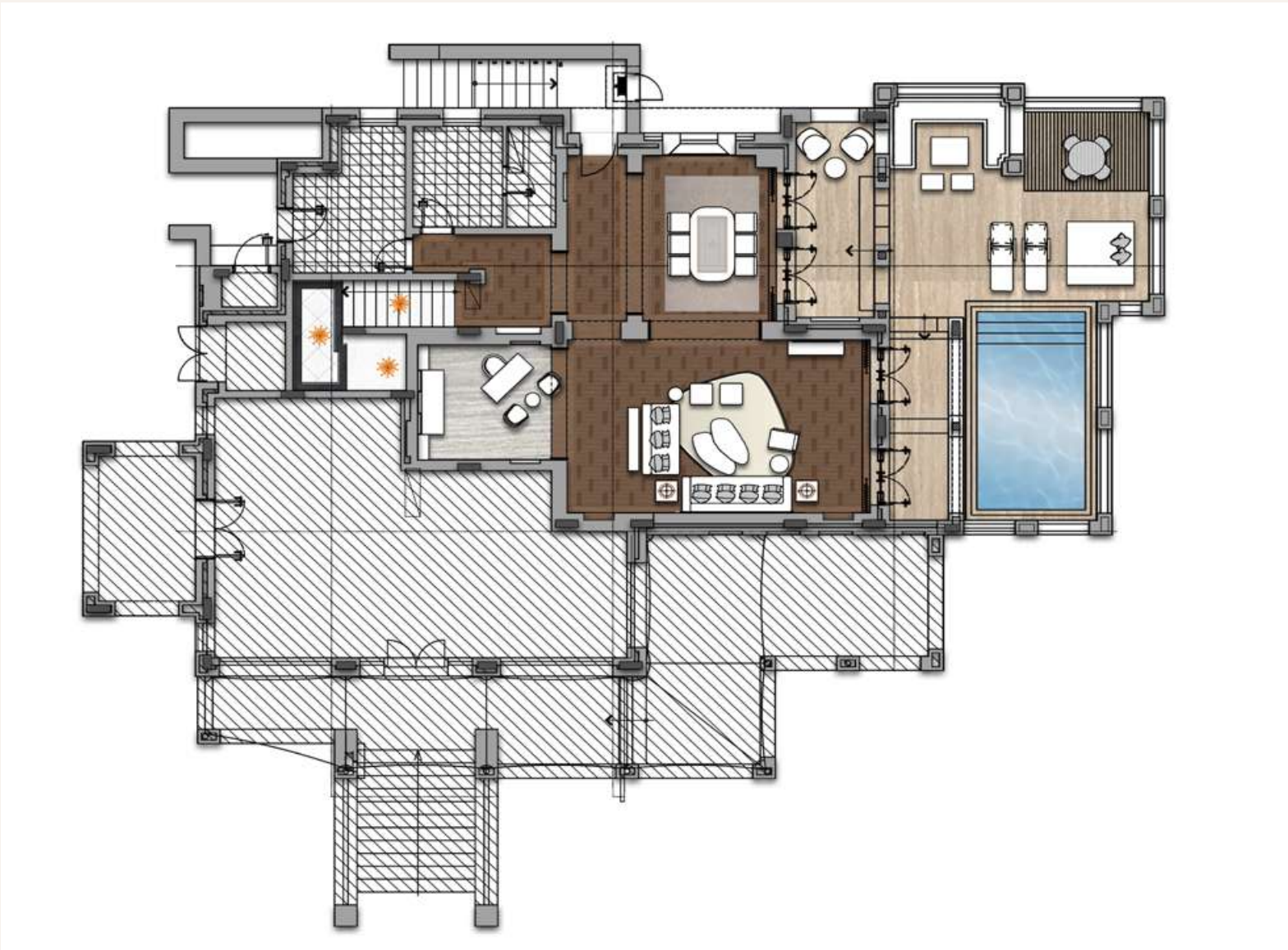




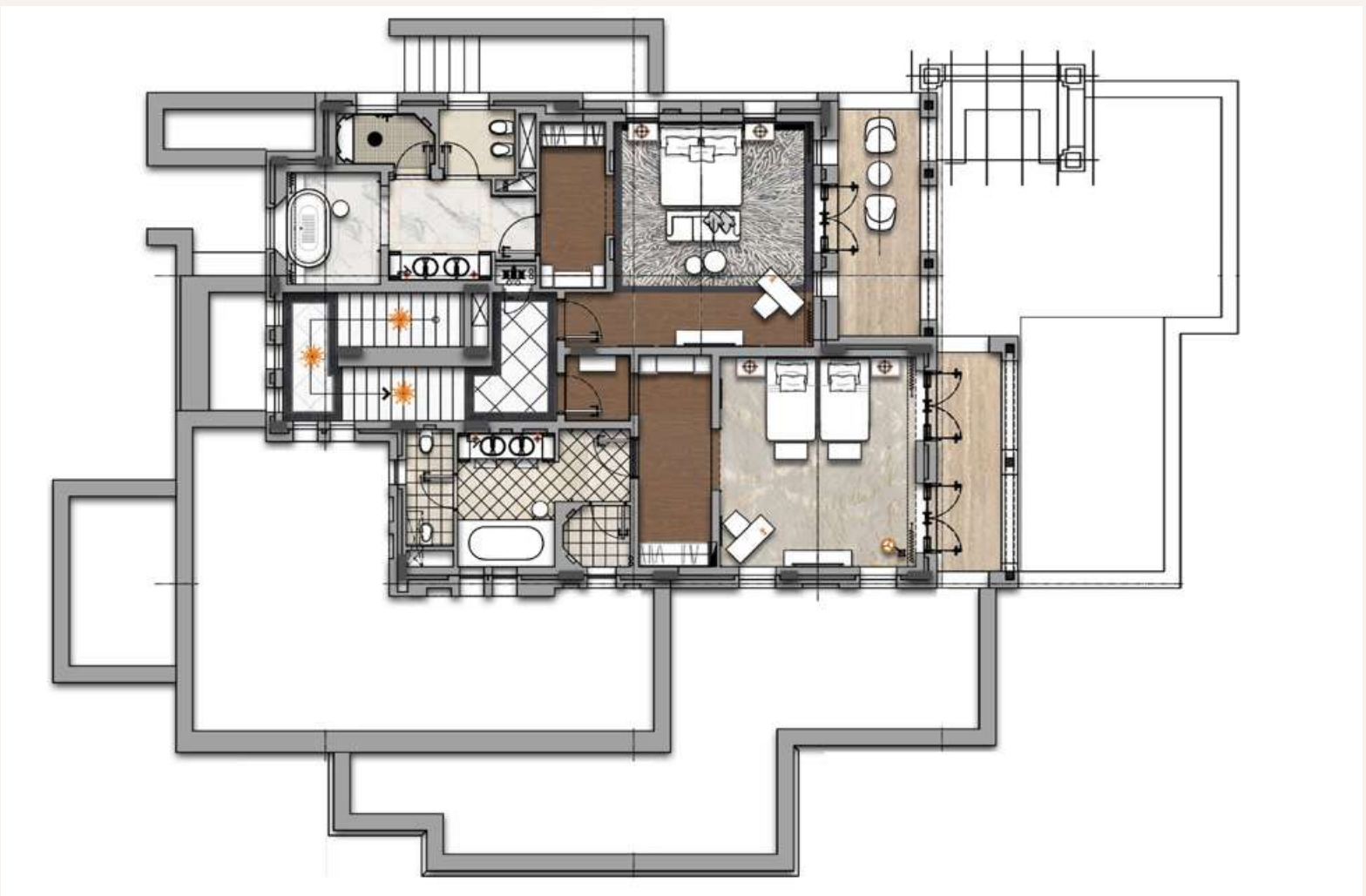
# Malakiya Villa - Dana

Two Bedroom Villa Floor plan

GROUND FLOOR



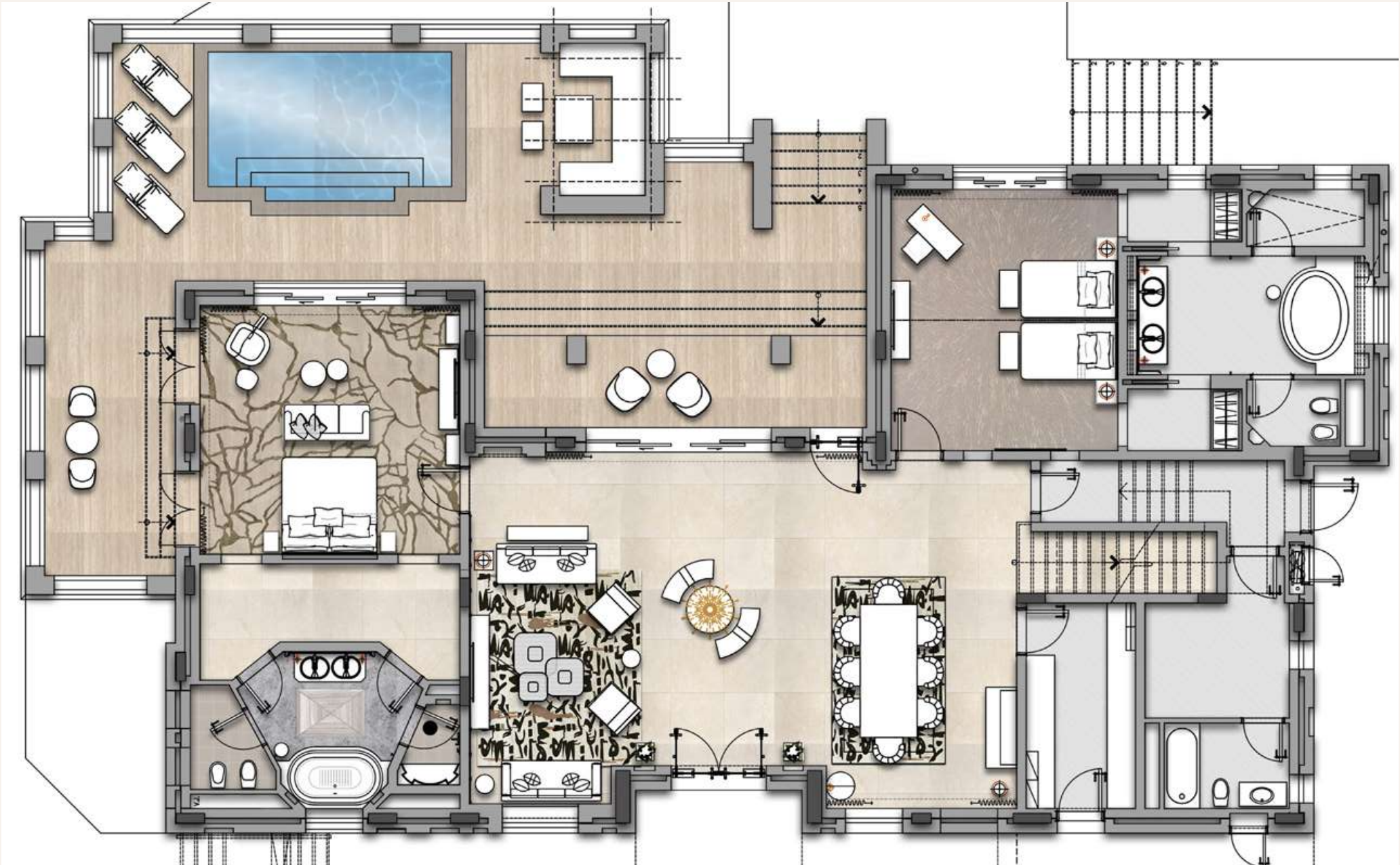
FIRST FLOOR



# Malakiya Villa - Zahra

Two Bedroom Villa Floor plan

GROUND FLOOR







# Wellness and Leisure

- A two-kilometre private pristine beach offering uninterrupted views of the iconic Jumeirah Burj Al Arab.
- Winding waterways with 40 abras for an enchanting tour of the resort
- The award-winning Talise Spa with 26 indoor and outdoor treatment rooms at Jumeirah Al Qasr and Spa Suites at Jumeirah Al Naseem
- Bespoke wellness programmes designed for the mind and body at Talise Spa
- Children have an unlimited access to KiDS at Jumeirah Al Qasr and KiDS at Jumeirah Al Naseem, offering daily entertainment and scheduled activities
- Complimentary and unlimited access to Wild Wadi Waterpark with 30 thrilling rides
- Souk Madinat covering a wide variety of selected boutiques and shops
- Collection of temperature-controlled indoor and outdoor pools
- Selection of thrilling beach watersport activities
- State-of-the-art fitness facilities at J Club with padel courts, tennis courts, and the region's first high altitude suite
- Discover the Mouratoglou tennis academy. Whether you are a professional or a beginner, their team of expert instructors will help guide you through stepping up your game
- One-of-a-kind Turtle Rehabilitation Lagoon located at Jumeirah Al Naseem with a daily feeding schedule for the rescued sea turtles prior to being released back into their natural habitat





Madinat Jumeirah Resort Map

SOUK MADINAT JUMEIRAH

- 1 THE NOODLE HOUSE  
Asian Soul Food
- 2 TRATTORIA TOSCANA  
Rustic Italian

JUMEIRAH MINA AL SALAM

- 3 AL SAMAR LOUNGE  
Lobby Lounge
- 4 BAHRI  
Exotic Cocktail Bar
- HANAAYA  
International Cuisine

- 6 CALA VISTA  
Italian Cuisine
- 7 J CLUB  
Healthy Lifestyle Café
- 8 TORTUGA  
Mexican Cuisine
- 9 SHIMMERS  
Beachside Greek Restaurant
- 10 MARGAUX  
French Pastry Boutique

JUMEIRAH AL QASR

- 11 ARBORETUM  
International Buffet
- 12 AL FAYROOZ LOUNGE  
Lobby Lounge
- 13 AL NAFOORAH  
Authentic Lebanese Cuisine
- 14 BAR BUCI  
Elegant Cocktail Bar
- 15 LA PROMENADE  
French Cuisine
- 16 FRENCH RIVIERA BEACH  
French Mediterranean Cuisine
- 17 PIERCHIC  
Italian Cuisine
- 18 PAI THAI  
Authentic Thai Cuisine
- 19 SCOOPS  
Ice Cream Parlour
- 20 JUICE BAR  
Fresh Juice
- 21 THE HIDE  
Brasserie
- 22 CÉLESTE  
Adult Pool & Bar
- 23 ATRANGI BY RITU DALMIA  
Authentic Indian Cuisine

JUMEIRAH AL NASEEM

- 24 ROCKFISH  
Mediterranean Cuisine
- 25 SUMMERSALT BEACH CLUB  
Latin American Cuisine
- 26 THE PALMERY  
International Cuisine
- 27 AL MANDHAR LOUNGE  
Lobby Lounge, International Cuisine
- 28 KAYTO  
Nikkei Cuisine
- 29 SUGARMASH  
Adult Pool & Bar
- 30 GELATERIA  
Ice Cream & Beverages
- 31 KALSA  
Main Pool & Bar
- 32 BLIND TIGER  
Speakeasy Cocktail Bar
- 33 IL BORRO TUSCAN  
BISTRO  
Authentic Tuscan Cuisine
- 34 BEEF BAR  
International Street Food
- 35 FLAMINGO ROOM  
BY TASHAS  
International Cuisine
- 36 MAYABAY  
Thai & Japanese Cuisine

◀ To Palm Jumeirah

Jumeirah  
Burj Al Arab

Jumeirah Dar Al Masyaf

- 1 - 8 Beach Houses
- 9 - 14 Cove Houses
- 15 - 29 Palm Houses

Padel  
Courts  
  
Tennis  
Courts

Talise Spa

KING SALMAN BIN ABDULAZIZ AL SAUD STREET

Malakiya Villas

Jumeirah Mina Al Salam

Jumeirah Al Naseem

Jumeirah Al Qasr

J Club

Turtle Rehabilitation Lagoon  
Il Borro, Flamingo Room, Beef Bar & MayaBay

JUMEIRA ROAD

JUMEIRA ROAD

▼ UMM SUQEIM ROAD

**BUGGY SHUTTLE:**  
You can travel around Madinat Jumeirah using our buggy shuttle to and from any of the buggy stops highlighted on this map. The shuttle runs daily from 9AM to 12:30AM, starting from Jumeirah Al Qasr Club Lounge, reaching each stop every 5 minutes. The route goes to Jumeirah Beach Hotel Lobby and back.

**ABRA SHUTTLE:**  
An alternative mode of transportation is available at Madinat Jumeirah: the traditional Abra boats. You can fetch an Abra at any of the stations highlighted on this map. The shuttle runs daily across the resort from 8AM to midnight.

EVENT SPACES

Conference Centre

- 37 Madinat Arena
- 38 Joharah Ballroom
- 39 Murjaan Ballroom
- 40 Fort Island
- 41 Meeting Rooms

Jumeirah Mina Al Salam

- 42 Majlis Al Mina & Majlis Al Salam

Jumeirah Al Qasr

- 43 Sunset Lounge
- 44 Layali Beach

Jumeirah Al Naseem

- 45 Al Badir Ballroom & Boardroom

Water Sports

Padel Courts

Tennis Courts

Pools

Main Buggy Stations

Buggy Shuttle Route

Main Entrances

Abra Stations

Abra Shuttle Route

Jogging Trail - 3.8 km

Walking Paths





JUMEIRAH RESERVATIONS

**JUMEIRAH HOTELS & RESORTS**  
Book online: [jumeirah.com](http://jumeirah.com)  
Tel: +971 4 364 7555  
Email: [reservations@jumeirah.com](mailto:reservations@jumeirah.com)  
GDS helpdesk: [helpdesk@jumeirah.com](mailto:helpdesk@jumeirah.com)

**JUMEIRAH LIVING SERVICED RESIDENCES**  
Book online: [jumeirahliving.com](http://jumeirahliving.com)  
Tel: +971 4 364 7676  
Fax: +971 4 364 7677  
Email: [reservations@jumeirahliving.com](mailto:reservations@jumeirahliving.com)  
[sales@jumeirahliving.com](mailto:sales@jumeirahliving.com)

**Toll free:**  
**From Americas:**  
Argentina 0800 6662 105  
Brazil 0800 8919 650  
Canada 1 888 387 8357  
Mexico 01 800 925 0323  
USA 1 877 854 8051

**From Asia Pacific:**  
Australia 1 800 269 388  
China 400 8866 087  
Hong Kong, China 800 933 730  
India 000 800 440 2144  
Japan 012 0081 700  
Malaysia 1 800 812 577  
New Zealand 0800 450 383  
Pakistan 00800 9097 1011  
South Korea 080 525 0880  
Singapore 800 1011 759

**From Europe:**  
Austria 0800 295 292  
Belgium 0800 74147  
Cyprus 800 92532  
Czech Republic 800 701 483  
Denmark 8088 7209  
France 0800 910379  
Germany 0800 1828 000  
Hungary 068 098 7430  
Ireland 1800 760 183  
Italy 800 870 121  
Luxembourg 800 25385  
Netherlands 800 0223 546  
Norway 800 10272  
Portugal 800 819 354  
Russia 8800 555 0324  
Spain 900 977 050  
Sweden 020 795 541  
Switzerland 0800 561 196  
United Kingdom 0800 0828 000

**From Middle East & Africa:**  
UAE 800 JUMEIRAH  
800 5863 4724  
Bahrain 800 00555  
Egypt 0800 0000 157  
Saudi Arabia 800 8971 439  
South Africa 0800 999 563

**Direct Dial (IDD Rates apply):**  
Kuwait +971 4 364 7555  
Qatar +971 4 364 7555  
Other countries +971 4 364 7555

JUMEIRAH GROUP GLOBAL SALES OFFICES

**MIDDLE EAST, AFRICA INDIA**  
Tel: +971 4 366 5761  
Email: [mesales@jumeirah.com](mailto:mesales@jumeirah.com)

**EUROPE**  
**Western Europe**  
Tel: +44 20 7858 7555  
Email: [uksales@jumeirah.com](mailto:uksales@jumeirah.com)  
**Central Europe**  
Tel: +49 69 297 237 610  
Email: [germanysales@jumeirah.com](mailto:germanysales@jumeirah.com)

**Russia & CIS**  
Tel: +7 495 641 18 36  
Email: [moscowsales@jumeirah.com](mailto:moscowsales@jumeirah.com)

**AMERICAS**  
**Canada, USA, Brazil**  
Tel: +1 917 755 1400  
Email: [ruztique.toscano@jumeirah.com](mailto:ruztique.toscano@jumeirah.com)

**ASIA PACIFIC**  
**China**  
Tel: +86 1391 767 1020  
Email: [tony.ma@jumeirah.com](mailto:tony.ma@jumeirah.com)

**Australia**  
Tel: +61 (0) 409 616046  
Email: [teree.george@jumeirah.com](mailto:teree.george@jumeirah.com)

CONNECT WITH US



Jumeirah



Jumeirah



Jumeirahgroup



JumeirahGroup



[jumeirah-group-jumeirah-hotels-and-resorts](https://www.linkedin.com/company/jumeirah-group-jumeirah-hotels-and-resorts)

For more information, visit [jumeirah.com](http://jumeirah.com)

For GDS Codes, visit [jumeirah.com/GDS](http://jumeirah.com/GDS)





© Jumeirah International LLC 2024

All rights reserved. No part of this publication may be reproduced in any material form (including photocopying or storage in any medium by electronic means) without the written permission of Jumeirah International LLC.

[jumeirah.com](http://jumeirah.com)