

STAY AT THE HOTEL
WHERE
HISTORY MEETS
LUXURY



CROWNE PLAZA®

ISTANBUL - OLD CITY

AN IHG® HOTEL

A peaceful experience in the heart of the
historical peninsula



Located at the heart of Historical Peninsula

Intertwined with history, central subject and ease of transportation provided by Crowne Plaza Istanbul Old City, Closed Bazaar, Blue Mosque, Hagia Sophia Museum, Walking to Basilica Cistern and Topkapi Palace distance. Taksim Square Nişantaşı, 5 km from Osmanbey and Şişli,

✈ New airport It is 45 minutes away from Istanbul Airport .



WELCOME

The 4 blocks and a courtyard connecting these blocks.

1st BLOCK
SPA ATRIUM
+Rooms

2nd BLOCK
LALE
RESTAURANT
Hairdresser
+Rooms

3rd BLOCK
CLUB LOUNGE
Offices
Galata M. Room
+Rooms

4th BLOCK
BALL ROOM
Fitness Center
+Rooms

LOBBY:

Reception / Shacez Bar / Abre Club / Lale Ale Carte Restaurant
Hanzade Meeting Room / Stores



HISTORICAL ICON IN THE CITY

The design of the building was commissioned to Architect Kemaleddin Bey. The building, completed in 1922, consisted of four blocks with a total of 124 apartments.

Architect Kemaleddin Bey was one of the pioneers of the National Architecture Movement.

His portrait is used on the back side of 20 TL banknotes.

Later, The Tayyare Apartment Buildings were renovated to house Crowne Plaza - Istanbul Old City. Building is considered to be one of the most iconic architecture work of its era and today.

Tayyare or Harikzedegan (Victims of Fire) Apartment Buildings are located in Laleli, Istanbul.

They were designed by Architect Kemaleddin Bey and completed in 1922.

A very destructive fire broke out in Istanbul in 1918 and destroyed a number of areas including particularly Cibali, Altınmermer and Fatih. Large areas of the city were totally destroyed leaving behind only burnt ruins of houses. To provide housing for the victims of the fire, the government planned to build apartments. The first of these would be Harikzedegan (meaning 'Victims of Fire'), located in Laleli.



WHERE HISTORY MEETS LUXURY

Crowne Plaza Istanbul Old City is a trademark under IHG Group in historical peninsula of Istanbul. Besides the synthesis of historical lines deriving from Ottoman Empire-Seljuk Ages and its modern design, it offers 257 rooms with a modern accommodation comfort and responses to daily needs. We will be very proud to welcome you at Crowne Plaza Istanbul Old City which targets the highest quality of service with IHG Group.



WORK



STAY



PLAY



OCCASION

The ideal place for your meetings, cocktails, seminars and training events.

WORK

Galata (37 m²) / Board: 7 pax



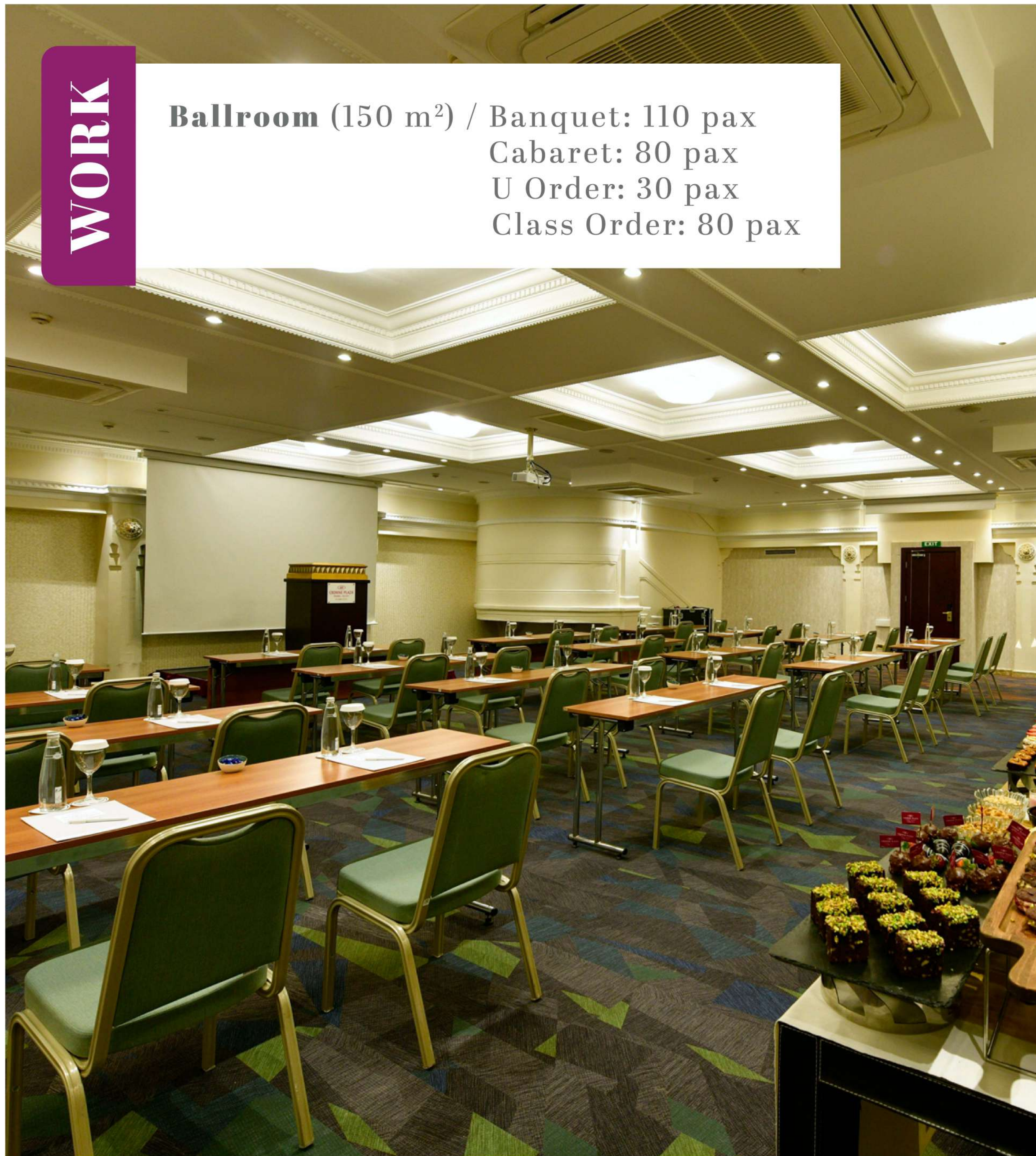
WORK

Hanzade (30 m²) / Board: 14 pax
U Order: 21 pax
Class Order: 10 pax



WORK

Ballroom (150 m²) / Banquet: 110 pax
Cabaret: 80 pax
U Order: 30 pax
Class Order: 80 pax

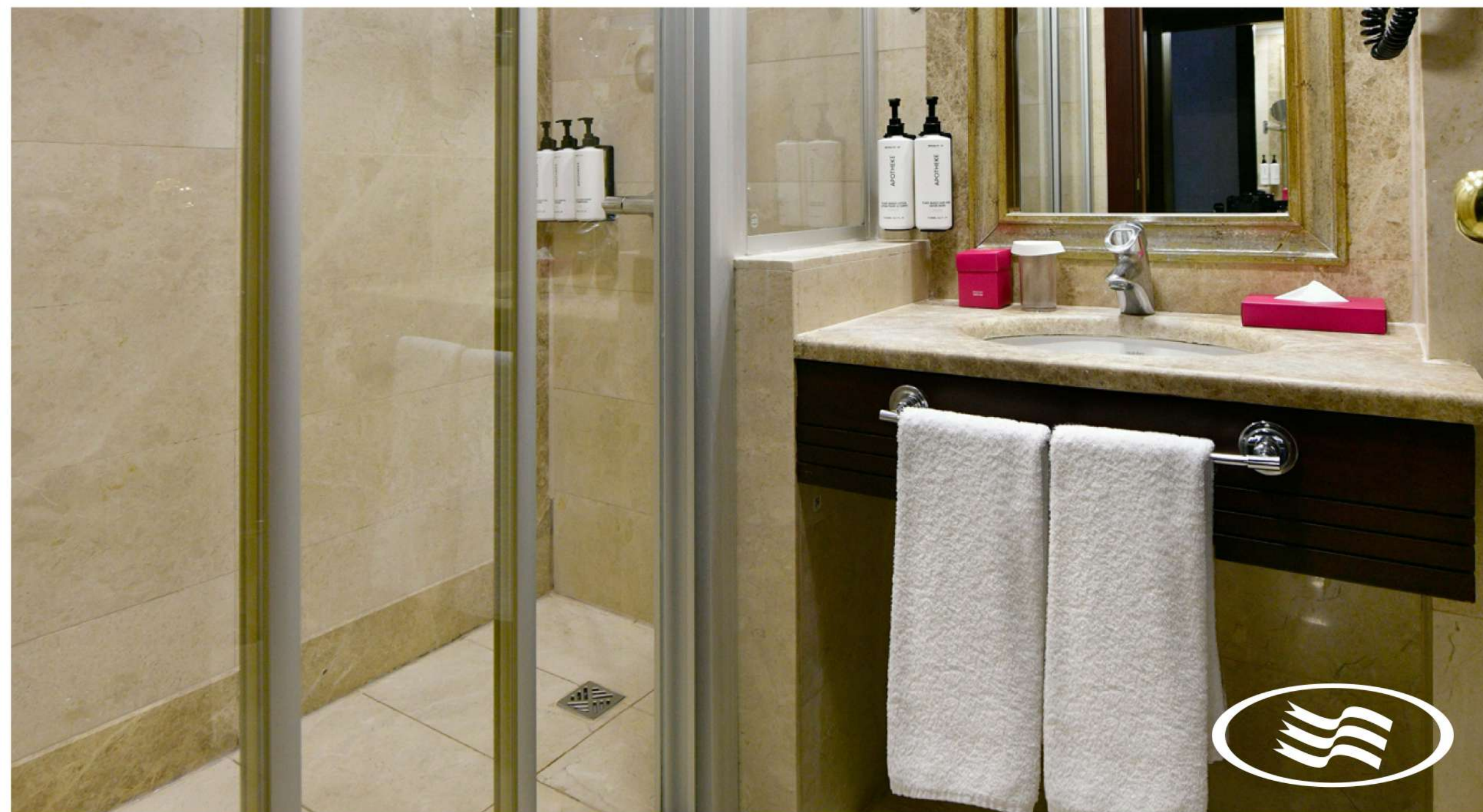


ROOMS

Experience an elegant combination of peace and comfort.

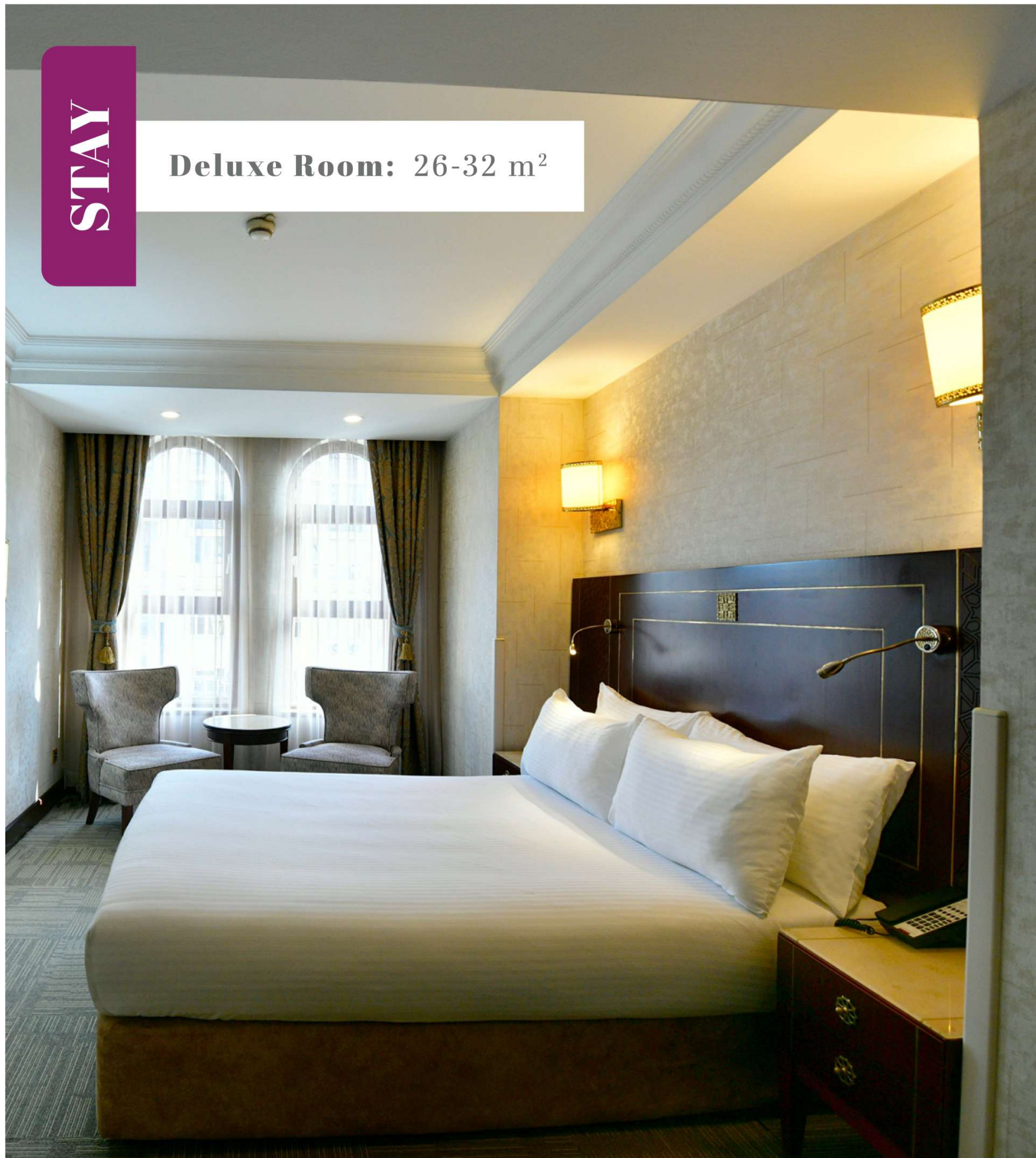
STAY

Standart Room: 20-25 m²



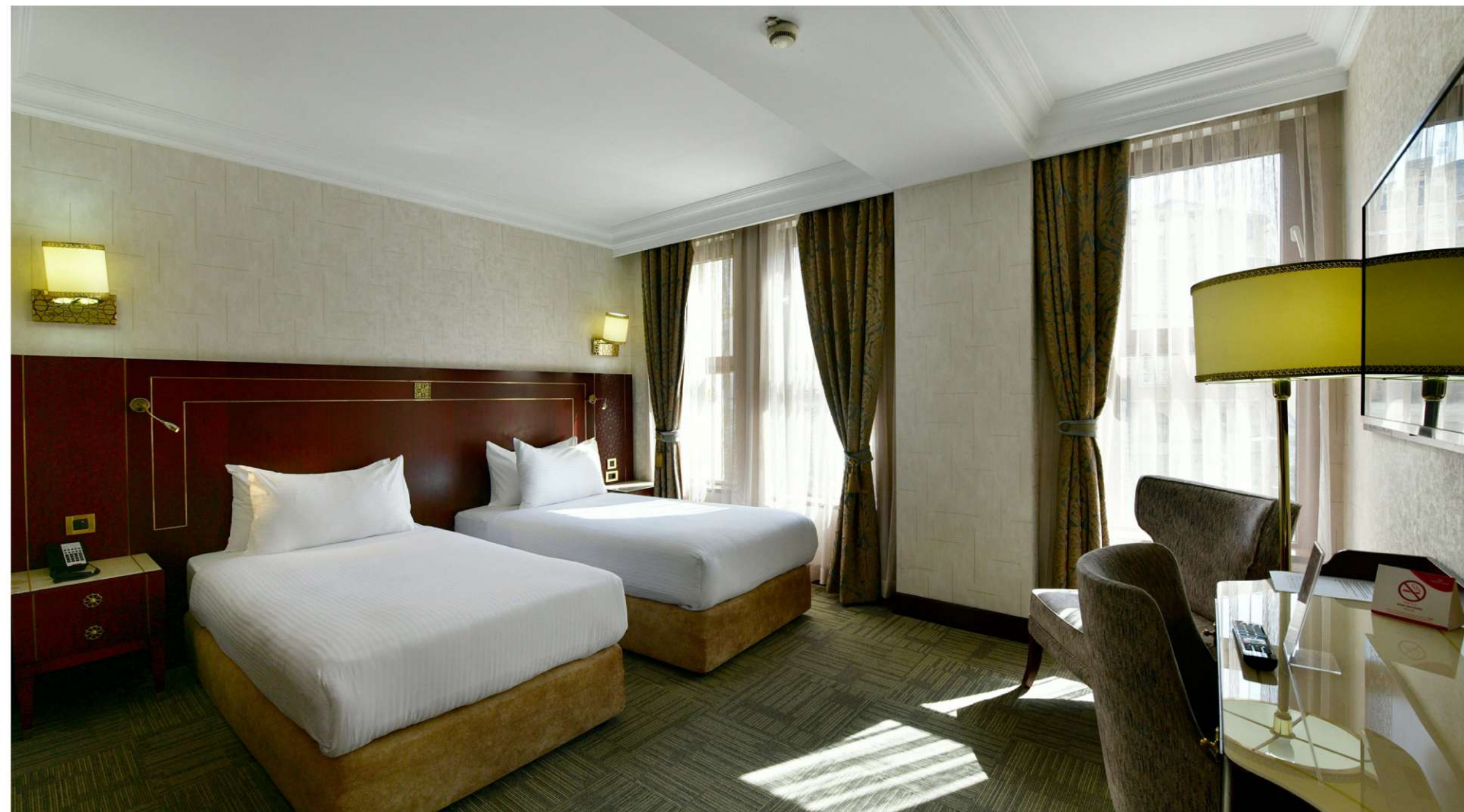
STAY

Deluxe Room: 26-32 m²



STAY

Club Room: 63-38 m²



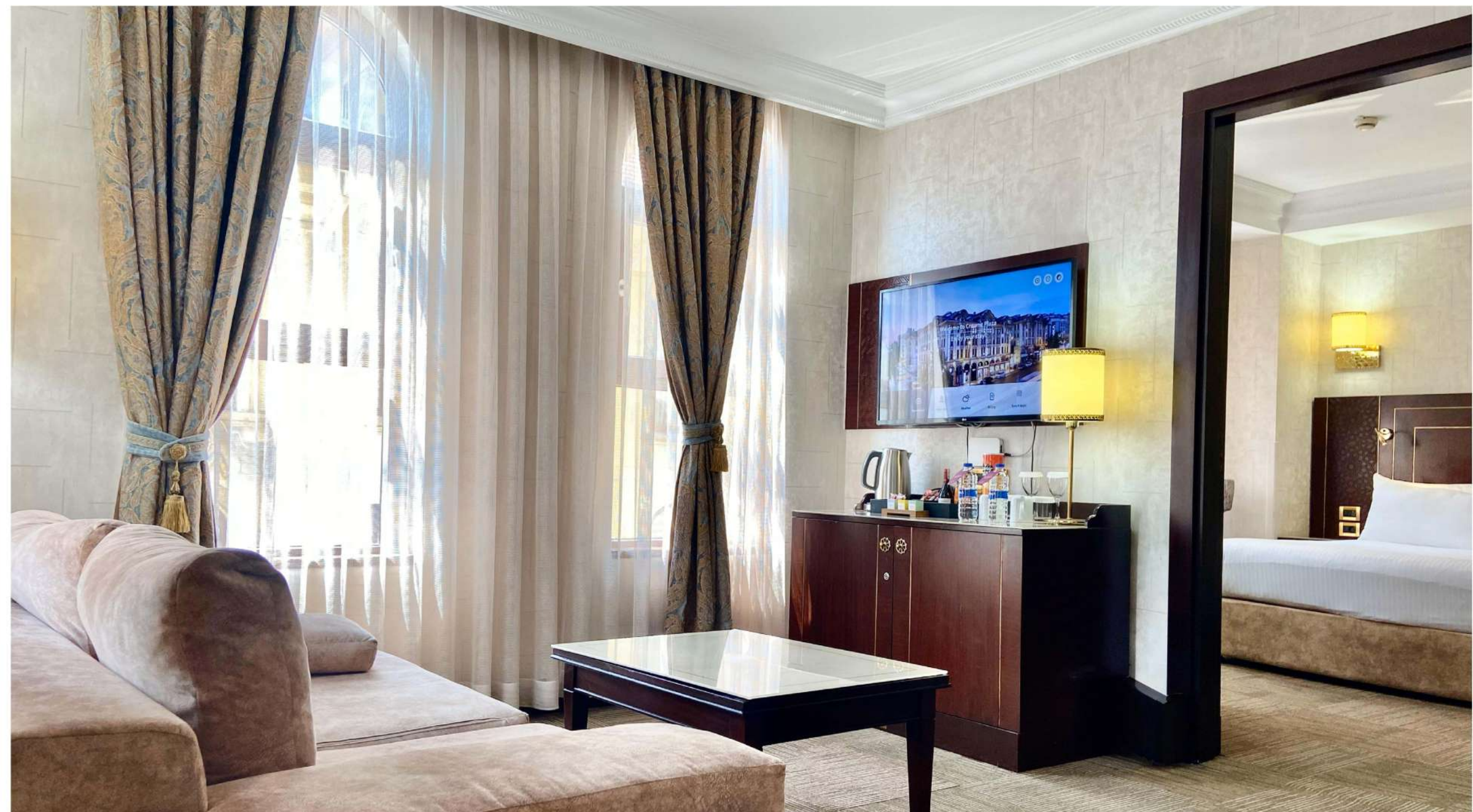
STAY

Jr. Suite: 39-42 m²



STAY

Executive Suite: 43-53 m²



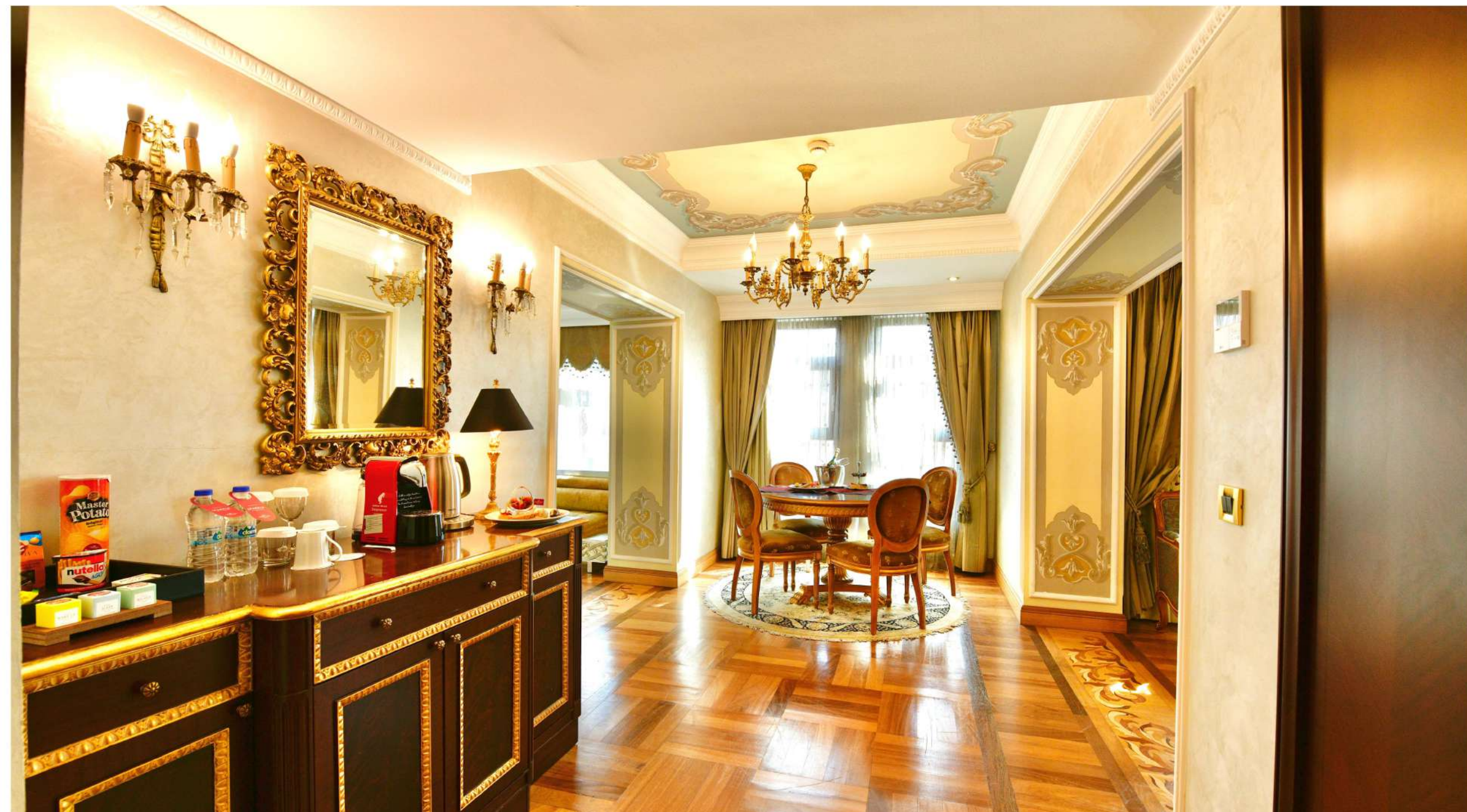
STAY

King Suite: 88 m²



STAY

King Suite: 88 m²



DINING & WINING

The hotel takes you to a gastronomic experience with delightful choices.

PLAY

LALE RESTAURANT



PLAY

LALE A'LE CARTE



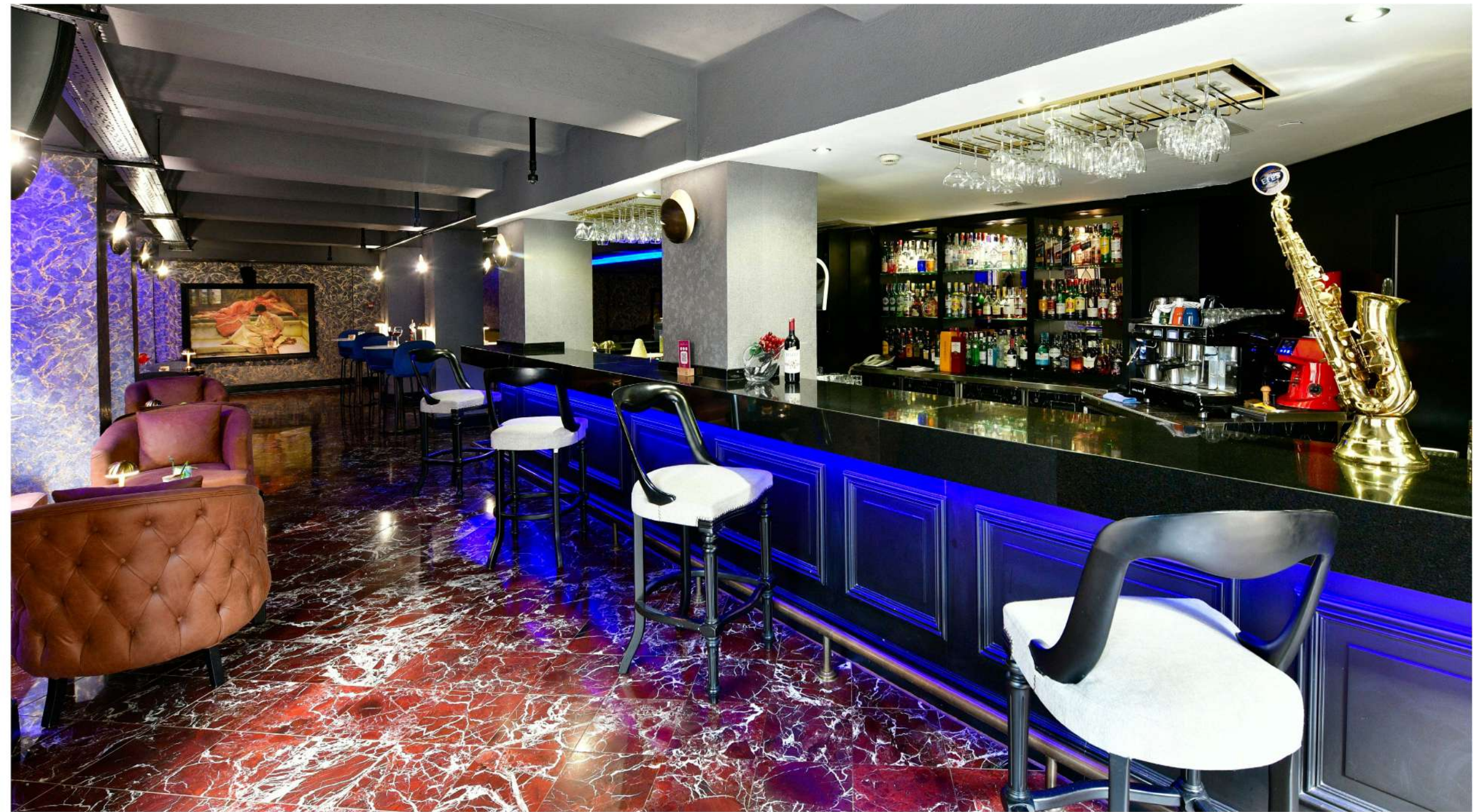
PLAY

SA'CEZ CAFE



PLAY

ABRA BAR



PLAY

CLUB LOUNGE



SPA & FITNESS

Discover Turkish Bath & experience a unique SPA.

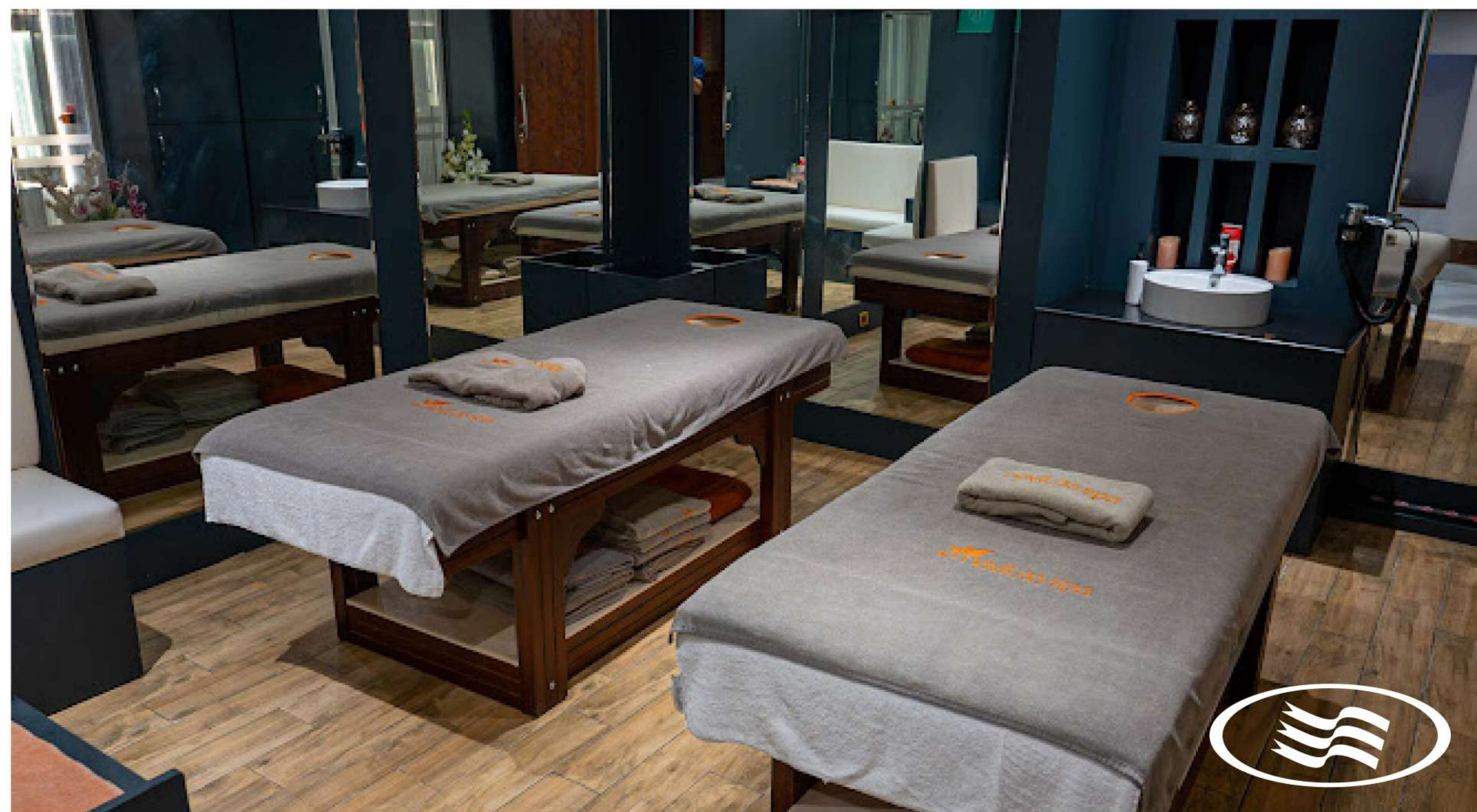
PLAY

FITNESS CENTER



PLAY

NAVITAS SPA



PLAY

SPA ANTRIUM

Touring the full historical peninsula there is so much to see. 15 minutes foot massage sweet tiredness of the day. It will pass and only in your mind what you see will remain.





**Balabanaga Mah. Fethi Bey Cad.
No:2 Laleli, Fatih 34134**



www.cpoldcity.com/tr



info@cpoldcity.com



+90 0212 514 90 00