



AN
OTHERWORLDLY
Dining Experience

*Feast on extraordinary cuisine
in elegant surroundings.
Unite, celebrate, or simply enjoy a moment of
peaceful reflection by the water.*

*Explore and book our selection of dining
experiences through this link.*

*Your Guide to Dining at
Jumeirah Marsa Al Arab*

THE FORE

BREAKFAST SERVICE

02

THE FORE BAR

DRINKS & LIGHT BITES

04

MIRABELLE

FRENCH MEDITERRANEAN

06

THE BOMBAY CLUB

INDIAN

08

MADAME LI

PAN-ASIAN

10

UMI KEI

JAPANESE

12

RIALTO

ITALIAN

14

RIALTO BAR

CHIC COCKTAIL BAR

16

**LOBBY LOUNGE &
PIERRE HERMÉ PARIS**

INTERNATIONAL CUISINE

AND VIENNOISERIE

18

ORIZONTA

EASTERN MEDITERRANEAN

20

COMMODORE CLUB

INTERNATIONAL

COMFORT FOOD

22

ILIANA

Restaurant & Rooftop

GREEK MEDITERRANEAN

24

KINUGAWA

Restaurant

CONTEMPORARY JAPANESE

26

THE CULLINAN

HIGH-END STEAKHOUSE

28

KIRA

MEDITERRANEAN-JAPANESE

FUSION

30

LITT BAR CLUB

BAR CLUB

32

POOL BARS:

ILIANA POOL CLUB

33

KINUGAWA ADULT POOL

33

RESORT POOL

34

COMMODORE CLUB POOL

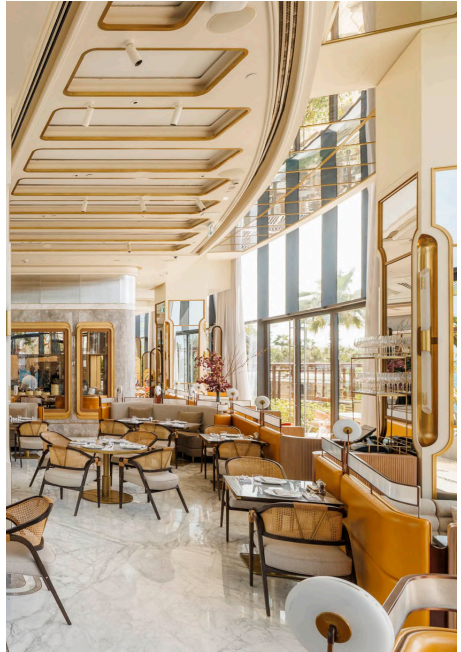
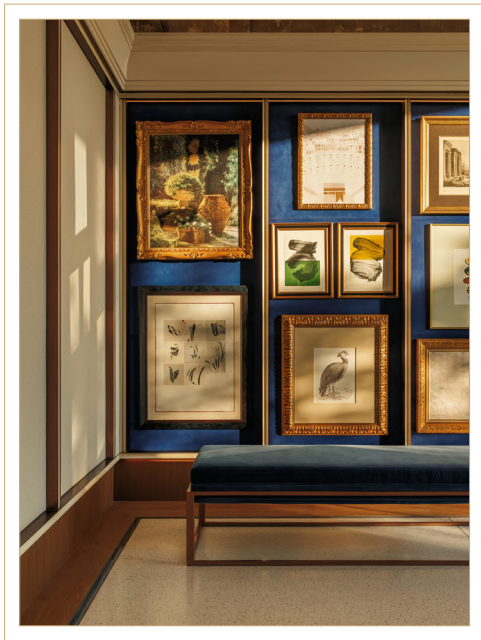
34



The Fore

*The Fore by day, four by night.
Four restaurants and a bar, one destination.*

The Fore offers a unique and transformative dining experience, elevating the guest's journey with a culinary adventure inspired by travel and evocative visual storytelling. In the morning, guests are greeted with a sumptuous breakfast, where the delectable array of buffet pastries and à la carte selections awakens the palate to a world of flavours. Yet, this remarkable venue does not rest after the morning repast.



As the breakfast hours gently wane, it undergoes a stunning metamorphosis, unfurling into a canvas that hosts four uniquely curated restaurants and one bar. These diverse gastronomic realms each bear their own distinct character and stand ready to enchant discerning guests with a symphony of tastes and sensations from day to night.

HOURS OF OPERATION: **BREAKFAST: 07:00 - 11:30**

CAPACITY: **581 PAX**



The *Fore* Bar

*Crafted cocktails, vibrant connections -
The Fore Bar is where stories unfold.*



At the heart of this transformative space is The Fore Bar—a striking centerpiece seamlessly connecting the four restaurants, creating a vibrant social hub. Inviting guests to gather over expertly crafted cocktails and fine wines, it radiates conviviality and captures the ever-changing energy of The Fore. Surrounded by custom books paying homage to discovery, culture, and tradition, the bar exudes personality and charm, making every visit a journey of its own.



HOURS OF OPERATION: **DAILY, 17:00 - 01:00**

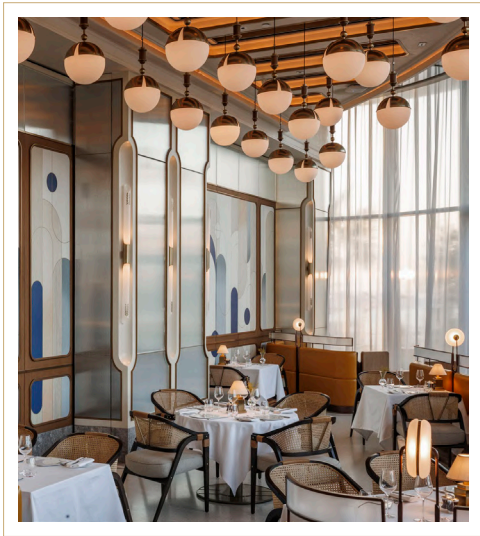
CAPACITY: **INDOOR: 20 PAX | OUTDOOR: 48 PAX**



FRENCH
MEDITERRANEAN

Mirabelle

*An eternal holiday
at the French Riviera*



Mirabelle sails into the heart of Dubai, effortlessly reigniting the glamour and stylish energy of the legendary Cote D'Azur in the French Riviera. Here, in a sleek contemporary setting inspired by the colours and mood of the ocean and nautical traditions, friends and family gather in a relaxed ambience that evokes long languid Mediterranean summers. More than a brasserie, Mirabelle is a place where simplicity is a perfect accompaniment to classic French cuisine elevated by the freshest seafood and shellfish.

HOURS OF OPERATION: **MON TO FRI - LUNCH: 12:30 - 15:30 | DINNER: 18:30 - 23:30**
WEEKENDS - LUNCH: 12:30 - 16:00 | DINNER: 18:30 - 23:30

CAPACITY: **INDOOR: 59 | OUTDOOR: 120**



The *Bombay* Club

*A gastronomic love letter to
Bombay helmed by Chef Manav Tuli*

Stepping into The Bombay Club is like embarking on an extraordinary culinary journey through India's glorious past—when the Gymkhana lifestyle was at its peak under the British Raj. As the heat of the day faded into spice-laden nights, unforgettable dinners were served in cool, marbled mansions, set like precious jewels along the coastline.



This enchanting, intimate space welcomes you like the gracious Indian hosts of yesteryear, our chefs are ready to delight both intimate and festive parties with our refined and elegant presentation of traditional Indian cuisine.

HOURS OF OPERATION: **DINNER: 18:30 - 23:30**

CAPACITY: **INDOOR: 42 | OUTDOOR: 80**

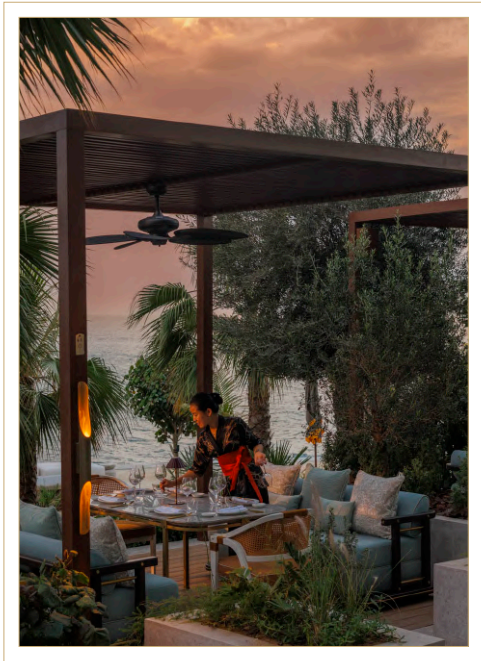


PAN-ASIAN

Madame Li

*A vibrant celebration
of cultures*

Welcome to the world of Madame Li. Elegant and sophisticated, she beckons you with grace to the exotic splendour of her private mansion, an inviting, convivial place that embraces modernity with the rich traditions of China and East Asia.



It's where families and friends linger, laughing and chatting over tables crowded with a kaleidoscope of some of the regions' most loved dishes-all against a lively backdrop of a steaming open dim sum kitchen and waiters expertly carving gleaming Peking Ducks with a panache.

HOURS OF OPERATION: MON TO FRI - LUNCH: 12:30 - 15:30 | DINNER: 18:30 - 23:30
WEEKENDS - LUNCH: 12:30 - 16:00 | DINNER: 18:30 - 23:30

CAPACITY: INDOOR: 84 | OUTDOOR: 100



Umi Kei

An immersive Izakaya experience

Umi Kei is an intimate and vibrant izakaya-inspired restaurant that focuses on elevated Japanese classics from shabu-shabu and ramen to robata dishes in a stylishly understated setting.

Inspired by 'Kintsugi,' the Japanese art of repairing broken pottery with gold, Umi Kei celebrates beauty in imperfection with soothing grace. This intimate Izakaya comes to life through the hum of casual conversation, the open show kitchen, and the warmth of the flame grill.



From robata dishes to steaming bowls of ramen, this is a place for informal gatherings, a vibrant and restorative haven, where we are reminded to remain optimistic when life's pieces seem to fall apart. All within a tasteful, understated setting that emphasises the power of simplicity.

HOURS OF OPERATION: **DINNER: 18:30 - 23:30**

CAPACITY: **INDOOR: 52 | OUTDOOR: 48**



ITALIAN

Rialto

A grand Venetian restaurant

Inspired by the most fabled of Venice's four ancient bridges, Rialto blends the glamour of the Italian Golden Age with the breathtaking modernity of Dubai. In an exceptional setting inspired by Italian modernist design and the scenic Liguria region, Rialto captures the essence of Venice's vibrant gastronomic traditions, interwoven with the cinematic mood of 1950s La Dolce Vita.



At its heart is a menu rooted in the bright flavours of the finest Venetian tables, and the extraordinary, seasonal produce of northern Italy.

HOURS OF OPERATION: **MON TO FRI - LUNCH: 12:30 - 15:30 | DINNER: 18:30 - 23:30**
WEEKENDS - LUNCH: 12:30 - 16:00 | DINNER: 18:30 - 23:30

CAPACITY: **INDOOR: 71 | OUTDOOR: 110**



ITALIAN

Rialto Bar

A chic cocktail bar with a Venetian twist

Infused with the seductive charm and timeless allure of 1950s Italy, Rialto's Bar is a captivating destination for a refined aperitif or a sophisticated after-dinner nightcap.



HOURS OF OPERATION: DAILY, 17:00 - 02:00

CAPACITY: INDOOR: 48 | OUTDOOR: 51



INTERNATIONAL CUISINE
AND VIENNOISERIE

Lobby Lounge & *Pierre Hermé Paris*

*Pierre Hermé's exquisite creations nestled
in the heart of the Lobby Lounge.*



The Lobby Lounge presents an international all-day menu, enriched with an array of indulgent delights. Highlights include signature pastries and handcrafted chocolates, masterfully crafted by celebrated pastry chef Pierre Hermé, promising an unforgettable culinary experience. A versatile space thoughtfully designed to be welcoming and tranquil, serving as an open ground for new artists. It is a starting point for pursuing dreams and a floor for inspiration, leading guests into a world of serenity and cultural richness.



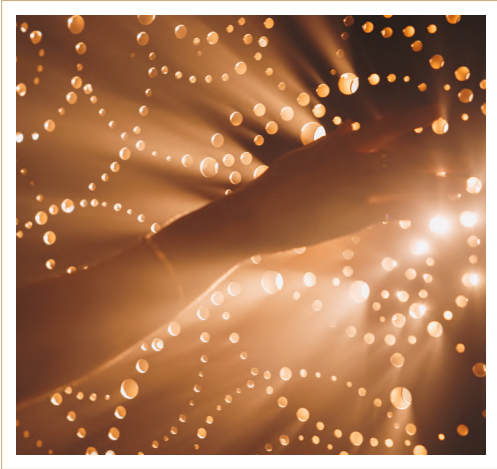
HOURS OF OPERATION: **MON TO FRI - DAILY, 08:00 - 23:00**
WEEKENDS - DAILY, 08:00 - 00:30
CAPACITY: **INDOOR: 90 | OUTDOOR: 52**



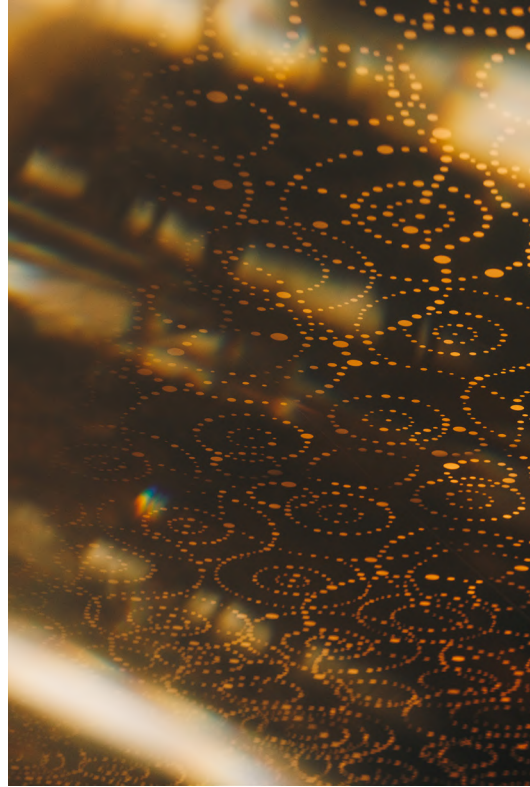
EASTERN
MEDITERRANEAN

Orizonta

*A bright and serene space where
the sky meets the sea*



Orizonta is a gastronomic restaurant celebrating wholesome Eastern Mediterranean cuisine, where thought-provoking and technically refined dishes are crafted with passion and precision. The menu is thoughtfully balanced with the finest locally sourced produce, enriched with Arabic spices and flavours. By blending time-honoured culinary traditions with innovative techniques, our dishes reflect the abundant bounty of both land and sea. Set against an elegant backdrop with breathtaking views of the iconic Jumeirah Burj Al Arab, Orizonta delivers a truly memorable fine dining experience.



HOURS OF OPERATION: **DAILY, 17:30- 23:30**
CAPACITY: **INDOOR: 40 | OUTDOOR: 44**



INTERNATIONAL
COMFORT FOOD

Commodore Club

*A harmonious blend
of social dining experiences*



Commodore Club welcomes guests throughout the day with an effortlessly elegant atmosphere. It beautifully crafts an internationally curated menu featuring generous portions of elevated comfort food. With an innovative twist on signature classics and captivating tableside service, the ambience is intimate, and the hospitality is genuine.

HOURS OF OPERATION: **DAILY, 07:00 - 23:30**

CAPACITY: **INDOOR: 70 | OUTDOOR: 105**



GREEK
MEDITERRANEAN

Iliana

Restaurant & Rooftop

A postcard from the Greek Islands



Magically suspended between blue skies and the azure sea, Iliana is a sultry beachfront retreat set against the breathtaking splendour of the resort. Inspired by the effortless magic and culinary traditions of the Greek islands, our Restaurant and Pool Club is the epitome of life by the ocean. Unfolding over a restaurant and bar, a sunset rooftop terrace overlooking Jumeirah Burj Al Arab, and an idyllic pool and beach with cabanas, we are the place to see and be seen - a carefree, sun-kissed haven, where long days turn into magical nights feasting, dancing and laughing with friends, while savouring the intensity of every ingredient and every moment.



HOURS OF OPERATION: **MON TO FRI - LUNCH: 12:00 - 17:00 | DINNER: 18:30 - 00:00**
WEEKENDS - DAILY, 12:00 - 00:00
ROOFTOP: 17:00 - 01:00

CAPACITY: **INDOOR: 115 | TERRACE: 170 | ROOFTOP: 120 | BAR: 13**



K I N U

gawa

DUBAI

CONTEMPORARY
JAPANESE

Kinugawa *Restaurant*

*Where Parisian elegance meets Japanese
savoir-faire in an ethereal setting.*

Kinugawa blends traditional Japanese techniques with Parisian flair, offering a bespoke sensory experience. Guests are invited to savour innovative dishes that transform authentic flavours into contemporary masterpieces, all within an elegantly designed space infused with Jumeirah's signature hospitality.



With a focus on sensuality, Kinugawa transcends the dining experience. Every detail, from the tableware to the sound design is carefully curated to awaken the senses, while materials are chosen to create an alluring and immersive atmosphere.

HOURS OF OPERATION: **DAILY, 12:00 - 00:00**

CAPACITY: **OUTDOOR: 180**



HIGH-END
STEAKHOUSE

The Cullinan

*A premier steakhouse crafting
an exquisite shore-to-sea journey.*



The Cullinan is a fine steakhouse offering gourmet dining, classic service, and a wine and meat sommelier. Exquisite dishes of meat, seafood and seasonal produce are all served with crystalline views of the Arabian gulf. Although the entire menu is of extraordinary quality, The Cullinan is truly an iconic destination for the best steaks and meat fare. For those seeking beauty, opulence and the unknown, The Cullinan promises a dining experience like no other.



HOURS OF OPERATION: DAILY, 12:00 - 02:00

CAPACITY: 240 PAX



MEDITERRANEAN-JAPANESE
FUSION

Kira

*Where Japanese grace
meets Mediterranean flair*

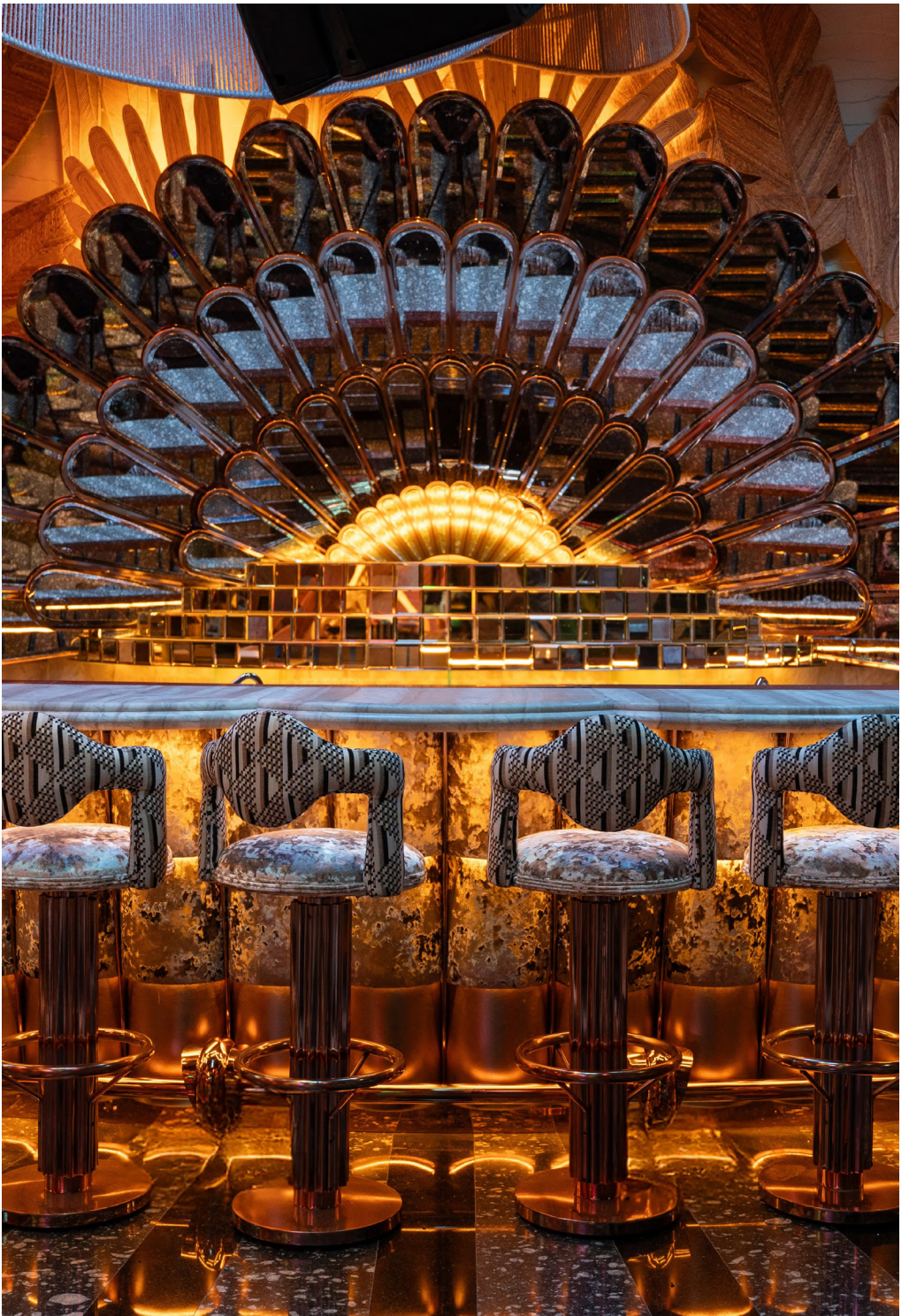
Where days melt into evenings, KIRA unveils a breathtaking blend of Mediterranean and Japanese soul. Natural, light and balanced flavours complement an entrancing ambiance of hand-painted decor and warm terracotta accents where KIRA creates an atmosphere that immerses all the senses.



Harmonizing refined Japanese minimalism with inviting Mediterranean warmth, this synthesis of cultural influences enhances the uniqueness and joy of shared experiences. More than fine dining, KIRA is a gateway to the celebration of life and beauty with every visit.

HOURS OF OPERATION: LUNCH: 12:30 - 16:30 | DINNER: 18:30 - 23:30

CAPACITY: 320 PAX



BAR CLUB

LITT *Bar Club*

A nightlife destination

Inspired by the ethereal glow of moonlight, LITT Bar Club transports you from the confines of the everyday, a hideaway created to lose yourself and revel in the heartbeat of nightlife.



HOURS OF OPERATION: DAILY, 18:30 - 02:00

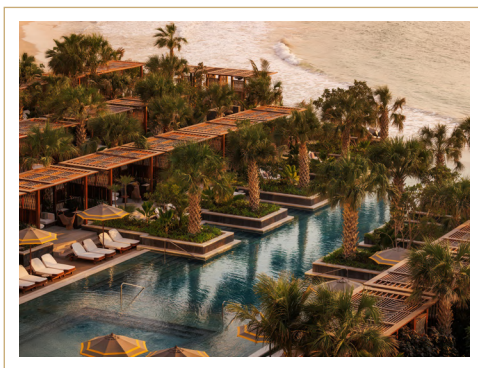
Iliana

Pool Club

An idyllic oasis to bask in the sun's warm embrace

Nestled beside Iliana Restaurant, Iliana Pool Club offers an exclusive oasis for Suite guests with crystalline waters and serene surroundings. Guests can unwind on lavish loungers, enjoying Greek bites and refreshing drinks while basking in the sun. With attentive service and a tranquil atmosphere, it's the perfect retreat for relaxation and memorable moments.

HOURS OF OPERATION: **09:00 - SUNSET**
CAPACITY: **POOL: 102 | POOL BAR: 40**



Kinugawa

Adult Pool

Where Tranquility Meets Glamour



Playing on all the senses, this elegant, adults-only sanctuary invites guests to unwind by the pool, savouring delectable Japanese flavours that tantalize the taste buds. Surrounded by sleek architecture and luxurious loungers, guests can relax while enjoying stunning views of Jumeirah Burj Al Arab and the pool's seamless day-to-night ambiance.

HOURS OF OPERATION: **09:00 - SUNSET**
CAPACITY: **POOL: 92 | POOL BAR: 42**

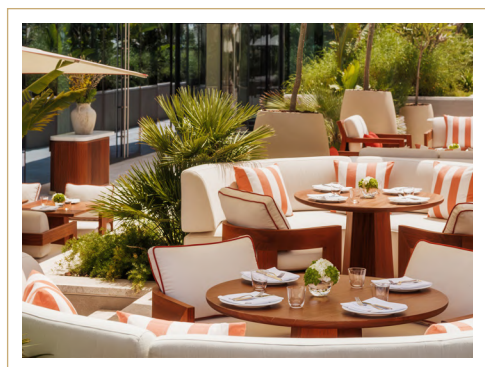
Resort Pool

A vibrant poolside escape, our Resort Pool invites guests to unwind in a stunning oasis where lush landscapes meet breathtaking views of Jumeirah Burj Al Arab. Serving lighthearted international cuisine, refreshing drinks, and poolside classics, it is the perfect place to soak up the sun in style.

HOURS OF OPERATION: **09:00 - SUNSET**
CAPACITY: **POOL: 242 | BEACH BAR: 80**



Commodore *Pool Club*



Perched at Jumeirah Residences Marsa Al Arab, our glistening interconnected infinity pool offers a serene escape with the Arabian Gulf at your doorstep. Bask in breathtaking views as you unwind in the water, savouring delectable light bites and refreshing chilled drinks.

HOURS OF OPERATION: **09:00 - SUNSET**
CAPACITY: **POOL: 78**

	THE BOMBAY CLUB	MIRABELLE	MADAME LI	UMI KEI
KIDS POLICY	DINNER: Guests aged 7 and above are welcome	All ages are welcome at all times	All ages are welcome at all times	DINNER: Guests aged 7 and above are welcome.
DRESS CODE	Smart Casual	Smart Casual	Smart Casual	Smart Casual
	RIALTO RESTAURANT	ILIANA RESTAURANT	KINUGAWA RESTAURANT	ORIZONTA
KIDS POLICY	LUNCH: Children of all ages are welcome DINNER: Guests aged 7 and above are welcome	LUNCH: Children of all ages are welcome until 7 PM. DINNER: Guests aged 7 and above are welcome.	MON-THU: Ages 7-12 welcomed from 12:00 - 20:00 FRI, SAT, SUN: Ages 12-16 welcomed from 12:00 - 20:00	All ages are welcome at all times
DRESS CODE	LUNCH: Smart Casual DINNER: Chic Elegant	LUNCH: Smart Casual DINNER: Chic Elegant	LUNCH: Smart Casual DINNER: Chic Elegant	Smart Casual
	COMMODORE CLUB	RIALTO BAR	THE FORE BAR	THE FORE
KIDS POLICY	All ages are welcome at all times	21+ only	All ages are welcome at all times	All ages are welcome at all times
DRESS CODE	Smart Casual	Chic Elegant	Smart Casual	Smart Casual
	LOBBY LOUNGE & PIERRE HERMÉ PARIS	RESORT POOL	KINUGAWA ADULT POOL	ILIANA POOL CLUB
KIDS POLICY	All ages are welcome at all times	All ages are welcome at all times	16 +	All ages are welcome at all times
DRESS CODE	Smart Casual	Pool Chic	Pool Chic	Pool Chic



JUMEIRAH
MARSA AL ARAB
DUBAI